



[Go to Product page](#)

Datasheet for ABIN5573855

anti-CBX3 antibody

2 Images

Overview

Quantity:	50 µg
Target:	CBX3
Reactivity:	Human, Hamster
Host:	Rabbit
Clonality:	Polyclonal
Conjugate:	This CBX3 antibody is un-conjugated
Application:	Western Blotting (WB), Immunoprecipitation (IP), Immunofluorescence (IF)

Product Details

Purpose:	Rabbit polyclonal antibody raised against synthetic peptide of CBX3.
Immunogen:	A synthetic peptide corresponding to human CBX3.
Sequence:	WHSCPEDEAQ
Cross-Reactivity:	Hamster, Human

Target Details

Target:	CBX3
Alternative Name:	CBX3 (CBX3 Products)
Background:	Full Gene Name: chromobox homolog 3 (HP1 gamma homolog, Drosophila) Synonyms: HECH,HP1-GAMMA,HP1Hs-gamma
Gene ID:	11335

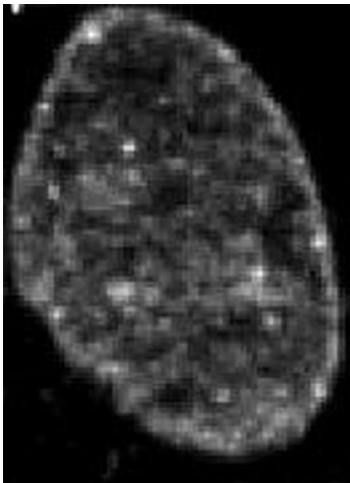
Application Details

Application Notes:	Western Blot (1:2000-1:10000) The optimal working dilution should be determined by the end user.
Restrictions:	For Research Use only

Handling

Format:	Liquid
Buffer:	In 120 mM sodium phosphate buffer, pH 7.4 (50 % glycerol)
Storage:	-20 °C,-80 °C
Storage Comment:	Store at -20°C. For long term storage store at -80°C. Aliquot to avoid repeated freezing and thawing.

Images



Immunofluorescence

Image 1. Immunofluorescent staining of CBX3 in baby hamster kidney cells with CBX3 polyclonal antibody . Cells were fixed with para-formaldehyde. The second antibody was Alexa Fluor 594- conjugated goat anti-rabbit IgG antibody.

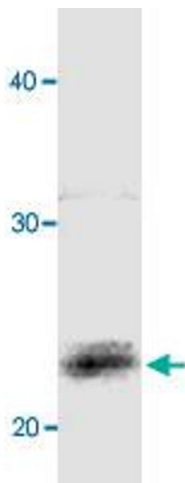


Image 2. Identification of CBX3 in baby hamster kidney extract with CBX3 polyclonal antibody by western blotting.