



[Go to Product page](#)

Datasheet for ABIN5573898
anti-CCDC19 antibody

3 Images

Overview

Quantity:	100 µL
Target:	CCDC19
Reactivity:	Human
Host:	Rabbit
Clonality:	Polyclonal
Conjugate:	This CCDC19 antibody is un-conjugated
Application:	Western Blotting (WB), Immunohistochemistry (Paraffin-embedded Sections) (IHC (p)), Immunofluorescence (IF)

Product Details

Purpose:	Rabbit polyclonal antibody raised against recombinant CCDC19.
Immunogen:	Recombinant protein corresponding to amino acids of recombinant CCDC19.
Sequence:	KEATMDAVMT RKKIMKQKEM VWNNNKKLSD LEEVAKERAQ NLLQRANKLR MEQEEELKDM SKIILNAKCH AIRDAQILEK QQI
Isotype:	IgG
Cross-Reactivity:	Human

Target Details

Target:	CCDC19
Alternative Name:	CCDC19 (CCDC19 Products)

Target Details

Background: Full Gene Name: coiled-coil domain containing 19
Synonyms: NESG1

Gene ID: 25790

Application Details

Application Notes: Immunohistochemistry (1:200-1:500)
Western Blot (1:100-1:250)
Immunofluorescence (1-4 µg/mL)
The optimal working dilution should be determined by the end user.

Restrictions: For Research Use only

Handling

Format: Liquid

Buffer: In PBS, pH 7.2 (40 % glycerol, 0.02 % sodium azide)

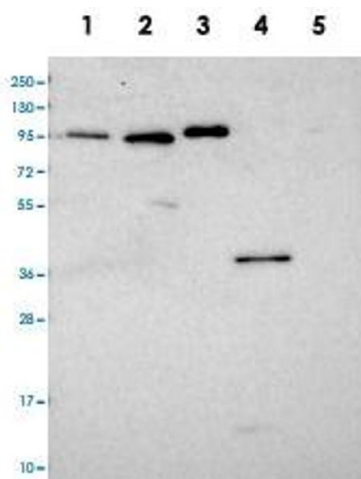
Preservative: Sodium azide

Precaution of Use: This product contains Sodium azide: a POISONOUS AND HAZARDOUS SUBSTANCE which should be handled by trained staff only.

Storage: 4 °C, -20 °C

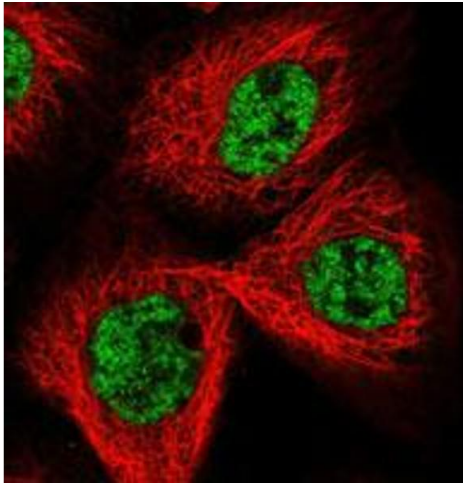
Storage Comment: Store at 4°C. For long term storage store at -20°C.
Aliquot to avoid repeated freezing and thawing.

Images



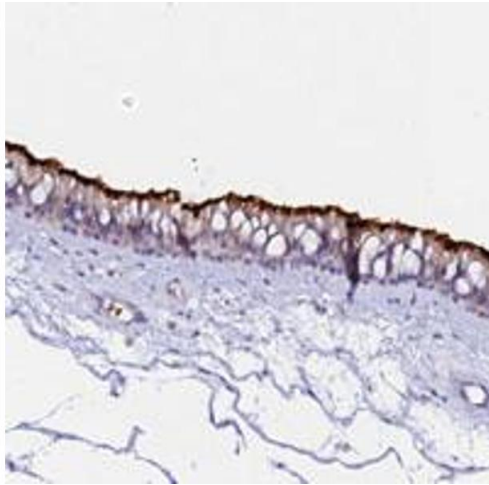
Western Blotting

Image 1. Western blot analysis of Lane 1: RT-4, Lane 2: U-251 MG, Lane 3: Human Plasma, Lane 4: Liver, Lane 5: Tonsil with CCDC19 polyclonal antibody at 1:100-1:250 dilution.



Immunofluorescence

Image 2. Immunofluorescent staining of human cell line A-431 with CCDC19 polyclonal antibody at 1-4 ug/mL dilution shows positivity in nucleus but not nucleoli.



Immunohistochemistry

Image 3. Immunohistochemical staining of human nasopharynx with CCDC19 polyclonal antibody shows strong positivity in cilia of respiratory epithelial cells at 1:200-1:500 dilution.