



[Go to Product page](#)

Datasheet for ABIN5573920  
**anti-CCDC61 antibody**

2 Images

Overview

Quantity:	100 µL
Target:	CCDC61
Reactivity:	Human
Host:	Rabbit
Clonality:	Polyclonal
Conjugate:	This CCDC61 antibody is un-conjugated
Application:	Immunohistochemistry (Paraffin-embedded Sections) (IHC (p)), Immunofluorescence (IF)

Product Details

Purpose:	Rabbit polyclonal antibody raised against recombinant CCDC61.
Immunogen:	Recombinant protein corresponding to amino acids of human CCDC61.
Sequence:	KTGNFKQFNI FCHMLESALT QSSESVTLDL LTYTDLES LR NRKMGG R P GS LAPRSAQLNS KRYLILY SV EFDRIHYPLP LPYQGK PDPV VLQGIIRSLK
Isotype:	IgG
Cross-Reactivity:	Human

Target Details

Target:	CCDC61
Alternative Name:	CCDC61 ( <a href="#">CCDC61 Products</a> )
Background:	Full Gene Name: coiled-coil domain containing 61

## Target Details

---

Gene ID: 729440

## Application Details

---

Application Notes: Immunohistochemistry (1:20-1:50)  
Immunofluorescence (1-4 µg/mL)  
The optimal working dilution should be determined by the end user.

Restrictions: For Research Use only

## Handling

---

Format: Liquid

Buffer: In PBS, pH 7.2, (40 % glycerol, 0.02 % sodium azide)

Preservative: Sodium azide

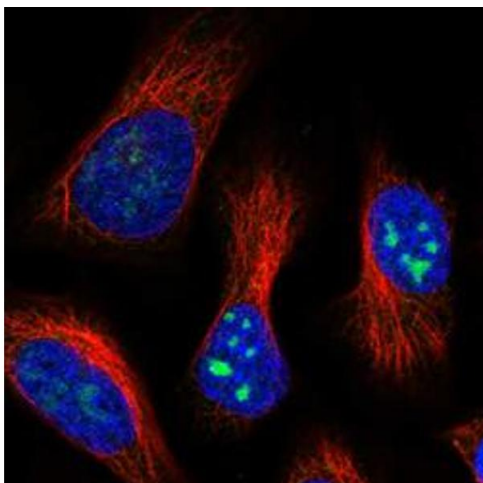
Precaution of Use: This product contains Sodium azide: a POISONOUS AND HAZARDOUS SUBSTANCE which should be handled by trained staff only.

Storage: 4 °C, -20 °C

Storage Comment: Store at 4°C. For long term storage store at -20°C.  
Aliquot to avoid repeated freezing and thawing.

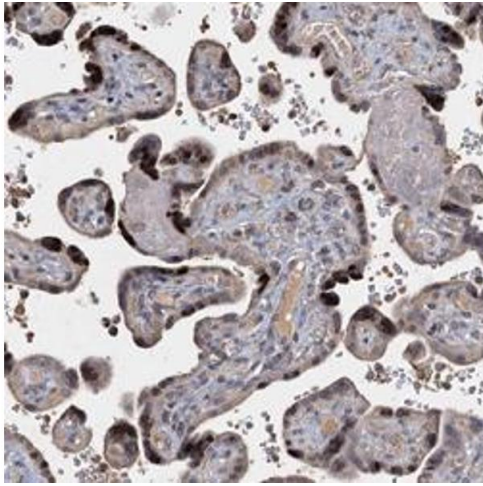
## Images

---



### Immunofluorescence

**Image 1.** Immunofluorescent staining of human cell line U-2 OS with CCDC61 polyclonal antibody at 1-4 µg/mL dilution shows positivity in nucleus and nucleoli.



### Immunohistochemistry

**Image 2.** Immunohistochemical staining of human placenta with CCDC61 polyclonal antibody shows moderate nuclear positivity in trophoblastic cells.