



[Go to Product page](#)

Datasheet for ABIN5573921
anti-CCDC64B antibody

1 Image

Overview

Quantity:	100 µL
Target:	CCDC64B
Reactivity:	Human
Host:	Rabbit
Clonality:	Polyclonal
Conjugate:	This CCDC64B antibody is un-conjugated
Application:	Immunohistochemistry (Paraffin-embedded Sections) (IHC (p))

Product Details

Purpose:	Rabbit polyclonal antibody raised against recombinant CCDC64B.
Immunogen:	Recombinant protein corresponding to amino acids of human CCDC64B.
Sequence:	EEKEVEVAKL QDEISLQQAELQSLREELQR QKELRAQEDP GEALHSALSD RDEAVNKALE LSLQLNRVSL ERDLSRELL
Isotype:	IgG
Cross-Reactivity:	Human

Target Details

Target:	CCDC64B
Alternative Name:	CCDC64B (CCDC64B Products)
Background:	Full Gene Name: coiled-coil domain containing 64B

Target Details

Synonyms: MGC158069

Gene ID: 146439

Application Details

Application Notes: Immunohistochemistry (1:2500-1:5000)
The optimal working dilution should be determined by the end user.

Restrictions: For Research Use only

Handling

Format: Liquid

Buffer: In PBS, pH 7.2 (40 % glycerol, 0.02 % sodium azide)

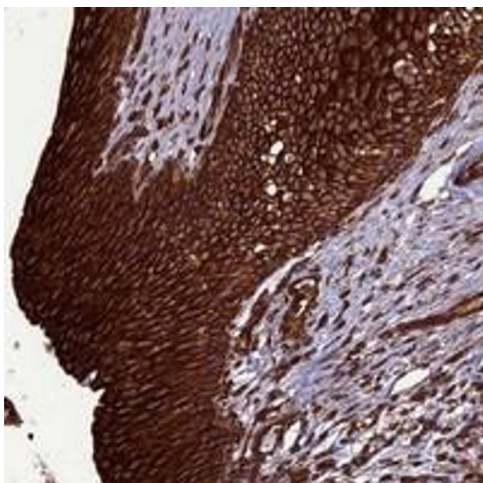
Preservative: Sodium azide

Precaution of Use: This product contains Sodium azide: a POISONOUS AND HAZARDOUS SUBSTANCE which should be handled by trained staff only.

Storage: 4 °C, -20 °C

Storage Comment: Store at 4°C. For long term storage store at -20°C.
Aliquot to avoid repeated freezing and thawing.

Images



Immunohistochemistry

Image 1. Immunohistochemical staining of human urinary bladder with CCDC64B polyclonal antibody shows strong cytoplasmic and membranous positivity in urothelial cells at 1:2500-1:5000 dilution.