



Datasheet for ABIN5573986  
**anti-CCL4 antibody (C-Term)**



[Go to Product page](#)

1 Image

Overview

Quantity:	100 µg
Target:	CCL4
Binding Specificity:	C-Term
Reactivity:	Mouse
Host:	Rabbit
Clonality:	Polyclonal
Conjugate:	This CCL4 antibody is un-conjugated
Application:	Western Blotting (WB)

Product Details

Purpose:	Rabbit polyclonal antibody raised against synthetic peptide of Ccl4.
Immunogen:	A synthetic peptide corresponding to C-terminus of mouse Ccl4.
Isotype:	IgG
Cross-Reactivity:	Mouse

Target Details

Target:	CCL4
Alternative Name:	Ccl4 ( <a href="#">CCL4 Products</a> )
Background:	Full Gene Name: chemokine (C-C motif) ligand 4 Synonyms: AT744.1,Act-2,MIP-1B,Mip1b,Scya4

## Target Details

Gene ID: 20303

## Application Details

Application Notes: Western Blot (1 µg/mL)  
The optimal working dilution should be determined by the end user.

Restrictions: For Research Use only

## Handling

Format: Lyophilized

Buffer: Lyophilized from 0.9 mg NaCl, 0.2 mg Na<sub>2</sub>HPO<sub>4</sub> (5 mg BSA, 0.05 mg sodium azide, 0.05 mg Thimerosal)

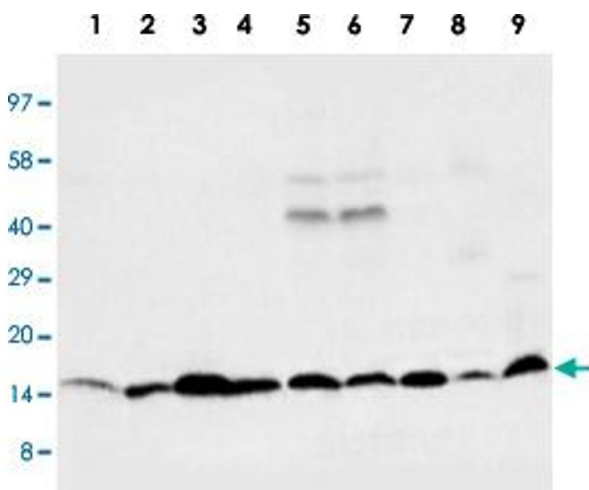
Preservative: Sodium azide, Thimerosal (Merthiolate)

Precaution of Use: This product contains Thimerosal (Merthiolate) and Sodium azide: POISONOUS AND HAZARDOUS SUBSTANCES which should be handled by trained staff only.

Storage: -20 °C

Storage Comment: Store at -20°C on dry atmosphere.  
After reconstitution with 200 µL of deionized water and concentration will be 500 µg/mL, store at -20°C or lower.  
Aliquot to avoid repeated freezing and thawing.

## Images



### Western Blotting

**Image 1.** Western blot analysis of tissue and whole cell extracts with Ccl4 polyclonal antibody . Lane 1 : rat spleen. Lane 2 : rat thymus. Lane 3 : rat liver. Lane 4 : rat small intestine. Lane 5 : MM453. Lane 6 : MM453. Lane 7 : Raji. Lane 8 : CEM. Lane 9 : SMMC.