

Datasheet for ABIN5574060
anti-CCR4 antibody (N-Term)[Go to Product page](#)

1 Image

Overview

Quantity:	50 µg
Target:	CCR4
Binding Specificity:	N-Term
Reactivity:	Human, Gorilla, Chimpanzee, Orang-Utan
Host:	Rabbit
Clonality:	Polyclonal
Conjugate:	This CCR4 antibody is un-conjugated
Application:	Immunohistochemistry (Paraffin-embedded Sections) (IHC (p))

Product Details

Purpose:	Rabbit polyclonal antibody raised against synthetic peptide of CCR4.
Immunogen:	A synthetic peptide corresponding to 18 amino acids at N-terminus of human CCR4.
Specificity:	BLAST analysis of the peptide immunogen showed no homology with other human proteins.
Cross-Reactivity:	Chimpanzee, Gorilla, Human, Orang-Utan
Cross-Reactivity (Details):	BLAST analysis of the peptide immunogen showed no homology with other human proteins.

Target Details

Target:	CCR4
Alternative Name:	CCR4 (CCR4 Products)
Background:	Full Gene Name: chemokine (C-C motif) receptor 4

Target Details

Synonyms: CC-CKR-4,CD194,CKR4,CMKBR4,ChemR13,HGCN:14099,K5-5,MGC88293

Gene ID: 1233

Application Details

Application Notes: Immunohistochemistry (Formalin/PFA-fixed paraffin-embedded sections) (10 µg/mL)
The optimal working dilution should be determined by the end user.

Restrictions: For Research Use only

Handling

Format: Liquid

Buffer: In PBS (0.09 % sodium azide)

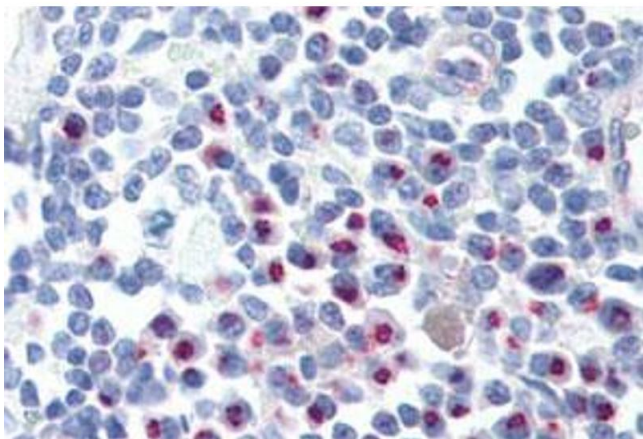
Preservative: Sodium azide

Precaution of Use: This product contains Sodium azide: a POISONOUS AND HAZARDOUS SUBSTANCE which should be handled by trained staff only.

Storage: 4 °C,-80 °C

Storage Comment: Store at 4°C. For long term storage store at -80°C.
Aliquot to avoid repeated freezing and thawing.

Images



Immunohistochemistry

Image 1. Immunohistochemical staining of human lymph node with CCR4 polyclonal antibody . Immunohistochemistry of formalin-fixed, paraffin-embedded tissue after heat-induced antigen retrieval.