

Datasheet for ABIN5574067
anti-CCR6 antibody (C-Term)[Go to Product page](#)

1 Image

Overview

Quantity:	50 µg
Target:	CCR6
Binding Specificity:	C-Term
Reactivity:	Human, Monkey, Gorilla
Host:	Rabbit
Clonality:	Polyclonal
Conjugate:	This CCR6 antibody is un-conjugated
Application:	Immunohistochemistry (Paraffin-embedded Sections) (IHC (p))

Product Details

Purpose:	Rabbit polyclonal antibody raised against synthetic peptide of CCR6.
Immunogen:	A synthetic peptide corresponding to 20 amino acids at C-terminus of human CCR6.
Specificity:	BLAST analysis of the peptide immunogen showed no homology with other human proteins.
Cross-Reactivity:	Gorilla, Human, Monkey
Cross-Reactivity (Details):	BLAST analysis of the peptide immunogen showed no homology with other human proteins.

Target Details

Target:	CCR6
Alternative Name:	CCR6 (CCR6 Products)
Background:	Full Gene Name: chemokine (C-C motif) receptor 6

Target Details

	Synonyms: BN-1,CD196,CKR-L3,CKR6,CKRL3,CMKBR6,DCR2,DRY-6,GPR-CY4,GPR29,GPRCY4,STRL22
Gene ID:	1235
Pathways:	cAMP Metabolic Process

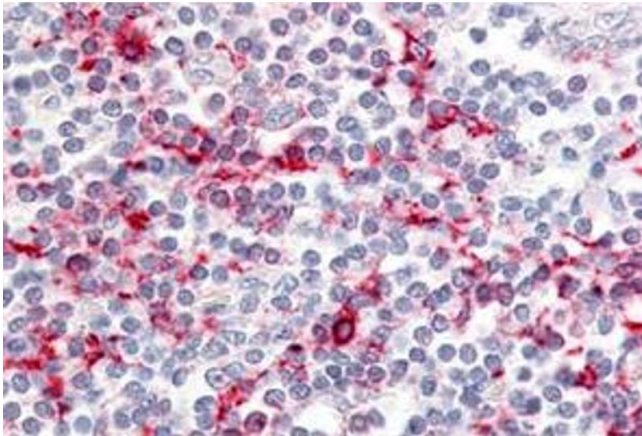
Application Details

Application Notes:	Immunohistochemistry (Formalin/PFA-fixed paraffin-embedded sections) (5 µg/mL) The optimal working dilution should be determined by the end user.
Restrictions:	For Research Use only

Handling

Format:	Liquid
Buffer:	In PBS (0.09 % sodium azide)
Preservative:	Sodium azide
Precaution of Use:	This product contains Sodium azide: a POISONOUS AND HAZARDOUS SUBSTANCE which should be handled by trained staff only.
Storage:	4 °C,-80 °C
Storage Comment:	Store at 4°C. For long term storage store at -80°C. Aliquot to avoid repeated freezing and thawing.

Images



Immunohistochemistry

Image 1. Immunohistochemical staining of human tonsil with CCR6 polyclonal antibody . Immunohistochemistry of formalin-fixed, paraffin-embedded tissue after heat-induced antigen retrieval.