

Datasheet for ABIN5574074

anti-CCR8 antibody (3rd Cytoplasmic Domain)**1** Image[Go to Product page](#)

Overview

Quantity:	50 µg
Target:	CCR8
Binding Specificity:	3rd Cytoplasmic Domain
Reactivity:	Human, Mouse, Gorilla
Host:	Rabbit
Clonality:	Polyclonal
Conjugate:	This CCR8 antibody is un-conjugated
Application:	ELISA, Immunohistochemistry (Paraffin-embedded Sections) (IHC (p))

Product Details

Purpose:	Rabbit polyclonal antibody raised against synthetic peptide of CCR8.
Immunogen:	A synthetic peptide corresponding to a 19 amino acid fragment from 3rd cytoplasmic domain of human CCR8.
Specificity:	Human CCR8.
Cross-Reactivity:	Gorilla, Human, Mouse

Target Details

Target:	CCR8
Alternative Name:	CCR8 (CCR8 Products)
Background:	Full Gene Name: chemokine (C-C motif) receptor 8

Target Details

Synonyms: CDw198,CKR-L1,CKRL1,CMKBR8,CMKBRL2,CY6,GPR-CY6,MGC129966,MGC129973,TER1

Gene ID: 1237

Application Details

Application Notes: ELISA
Immunohistochemistry (Formalin/PFA-fixed paraffin-embedded sections) (5 µg/mL)
The optimal working dilution should be determined by the end user.

Restrictions: For Research Use only

Handling

Format: Liquid

Buffer: In PBS (0.09 % sodium azide).

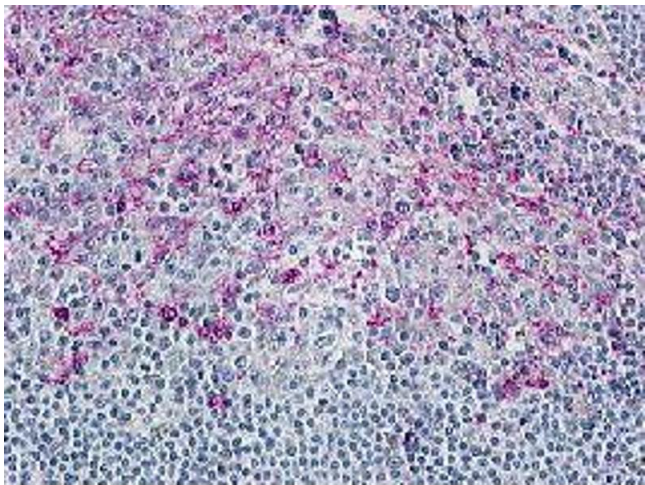
Preservative: Sodium azide

Precaution of Use: This product contains Sodium azide: a POISONOUS AND HAZARDOUS SUBSTANCE which should be handled by trained staff only.

Storage: 4 °C, -20 °C

Storage Comment: Store at 4°C for up to 1 month. For long term storage, store at -20°C or below.
Aliquot to avoid repeated freezing and thawing.

Images



Immunohistochemistry

Image 1. Immunohistochemical (Formalin/PFA-fixed paraffin-embedded sections) staining in human tonsil with CCR8 polyclonal antibody .