

Datasheet for ABIN5574081 anti-CCRL1 antibody (Cytoplasmic Domain)

[Go to Product page](#)

1 Image

Overview

Quantity:	50 µg
Target:	CCRL1
Binding Specificity:	Cytoplasmic Domain
Reactivity:	Human, Mouse, Rat, Rabbit, Dog, Horse, Pig, Gorilla
Host:	Rabbit
Clonality:	Polyclonal
Conjugate:	This CCRL1 antibody is un-conjugated
Application:	Immunohistochemistry (Paraffin-embedded Sections) (IHC (p))

Product Details

Purpose:	Rabbit polyclonal antibody raised against synthetic peptide of CCRL1.
Immunogen:	A synthetic peptide corresponding to 16 amino acids at cytoplasmic domain of human CCRL1.
Specificity:	BLAST analysis of the peptide immunogen showed no homology with other human proteins, except CCR6 (63 %).
Cross-Reactivity:	Dog, Gorilla, Horse, Human, Mouse, Pig, Rabbit, Rat
Cross-Reactivity (Details):	BLAST analysis of the peptide immunogen showed no homology with other human proteins, except CCR6 (63 %).

Target Details

Target:	CCRL1
---------	-------

Target Details

Alternative Name:	CCRL1 (CCRL1 Products)
Background:	Full Gene Name: chemokine (C-C motif) receptor-like 1 Synonyms: CC-CKR-11,CCBP2,CCR10,CCR11,CCX-CKR,CKR-11,PPR1,VSHK1
Gene ID:	51554

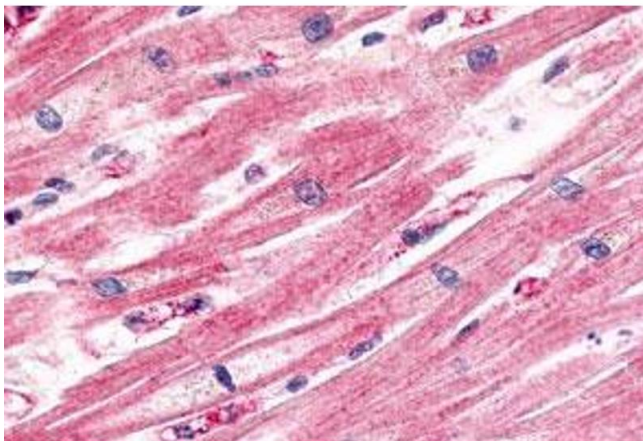
Application Details

Application Notes:	Immunohistochemistry (Formalin/PFA-fixed paraffin-embedded sections) (24 µg/mL) The optimal working dilution should be determined by the end user.
Restrictions:	For Research Use only

Handling

Format:	Liquid
Buffer:	In PBS (0.09 % sodium azide)
Preservative:	Sodium azide
Precaution of Use:	This product contains Sodium azide: a POISONOUS AND HAZARDOUS SUBSTANCE which should be handled by trained staff only.
Storage:	4 °C,-80 °C
Storage Comment:	Store at 4°C. For long term storage store at -80°C. Aliquot to avoid repeated freezing and thawing.

Images



Immunohistochemistry

Image 1. Immunohistochemical staining of human heart, cardiac myocytes with CCRL1 polyclonal antibody . Immunohistochemistry of formalin-fixed, paraffin-embedded tissue after heat-induced antigen retrieval.