



[Go to Product page](#)

Datasheet for ABIN5574083

## anti-CCRL2 antibody (Cytoplasmic Domain)

### 1 Image

#### Overview

Quantity:	50 µg
Target:	CCRL2
Binding Specificity:	Cytoplasmic Domain
Reactivity:	Human
Host:	Rabbit
Clonality:	Polyclonal
Conjugate:	This CCRL2 antibody is un-conjugated
Application:	Immunohistochemistry (Paraffin-embedded Sections) (IHC (p))

#### Product Details

Purpose:	Rabbit polyclonal antibody raised against synthetic peptide of CCRL2.
Immunogen:	A synthetic peptide corresponding to 20 amino acids at cytoplasmic domain of human CCRL2.
Specificity:	BLAST analysis of the peptide immunogen showed no homology with other human proteins.
Cross-Reactivity:	Human
Cross-Reactivity (Details):	BLAST analysis of the peptide immunogen showed no homology with other human proteins.

#### Target Details

Target:	CCRL2
Alternative Name:	CCRL2 ( <a href="#">CCRL2 Products</a> )
Background:	Full Gene Name: chemokine (C-C motif) receptor-like 2

## Target Details

Synonyms: CKRX,CRAM-A,CRAM-B,FLJ55815,HCR,MGC116710

Gene ID: 9034

## Application Details

Application Notes: Immunohistochemistry (Formalin/PFA-fixed paraffin-embedded sections) (11 µg/mL)  
The optimal working dilution should be determined by the end user.

Restrictions: For Research Use only

## Handling

Format: Liquid

Buffer: In PBS (0.09 % sodium azide)

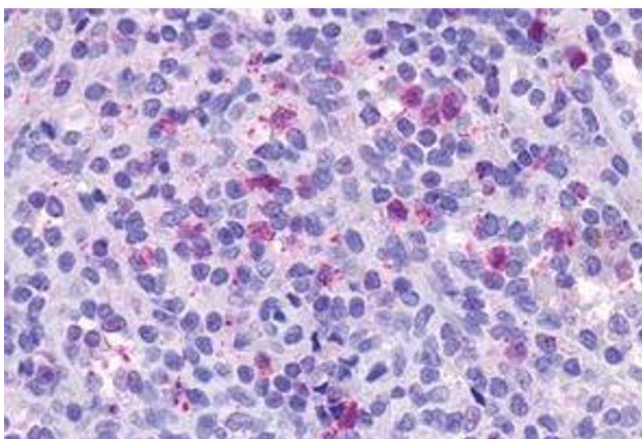
Preservative: Sodium azide

Precaution of Use: This product contains Sodium azide: a POISONOUS AND HAZARDOUS SUBSTANCE which should be handled by trained staff only.

Storage: 4 °C,-80 °C

Storage Comment: Store at 4°C. For long term storage store at -80°C.  
Aliquot to avoid repeated freezing and thawing.

## Images



### Immunohistochemistry

**Image 1.** Immunohistochemical staining of human spleen with CCRL2 polyclonal antibody . Immunohistochemistry of formalin-fixed, paraffin-embedded tissue after heat-induced antigen retrieval.