

Datasheet for ABIN5574325
anti-CD300a antibody (AA 98-149)[Go to Product page](#)

1 Image

Overview

Quantity:	100 µL
Target:	CD300a (CD300A)
Binding Specificity:	AA 98-149
Reactivity:	Human
Host:	Rabbit
Clonality:	Polyclonal
Conjugate:	This CD300a antibody is un-conjugated
Application:	Immunohistochemistry (Paraffin-embedded Sections) (IHC (p))

Product Details

Purpose:	Rabbit polyclonal antibody raised against partial recombinant human CD300A.
Immunogen:	Recombinant protein corresponding to amino acids 98-149 of human CD300A.
Sequence:	SGDHSELSQN PKQASPREEL HYASVVFDSN TNRIAAQRPR EEEPDSDYSV IRK
Isotype:	IgG
Cross-Reactivity:	Human

Target Details

Target:	CD300a (CD300A)
Alternative Name:	CD300A (CD300A Products)
Background:	Full Gene Name: CD300a molecule

Target Details

	Synonyms: CMRF-35-H9,CMRF-35H,CMRF35H,CMRF35H9,IGSF12,IRC1,IRC2,IRp60
Gene ID:	11314
Pathways:	Regulation of Leukocyte Mediated Immunity , Positive Regulation of Immune Effector Process

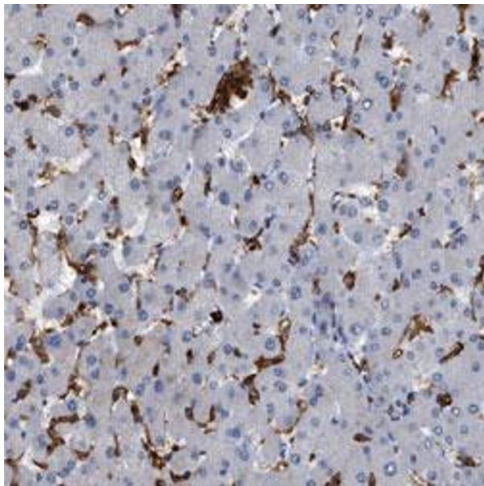
Application Details

Application Notes:	Immunohistochemistry (Formalin/PFA-fixed paraffin-embedded sections) (1:20-1:50) The optimal working dilution should be determined by the end user.
Restrictions:	For Research Use only

Handling

Format:	Liquid
Buffer:	In PBS, pH 7.2 (40 % glycerol, 0.02 % sodium azide)
Preservative:	Sodium azide
Precaution of Use:	This product contains Sodium azide: a POISONOUS AND HAZARDOUS SUBSTANCE which should be handled by trained staff only.
Storage:	4 °C,-20 °C
Storage Comment:	Store at 4°C. For long term storage store at -20°C. Aliquot to avoid repeated freezing and thawing.

Images



Immunohistochemistry

Image 1. Immunohistochemical staining (Formalin-fixed paraffin-embedded sections) of human liver shows strong cytoplasmic positivity in Kupffer cells with CD300A polyclonal antibody at 1:20 - 1:50 dilution.