



[Go to Product page](#)

Datasheet for ABIN5574638
anti-CD52 antibody (CF-Blue)

1 Image

Overview

Quantity:	100 reactions
Target:	CD52
Reactivity:	Human
Host:	Mouse
Clonality:	Monoclonal
Conjugate:	This CD52 antibody is conjugated to CF-Blue
Application:	Flow Cytometry (FACS), Immunohistochemistry (IHC)

Product Details

Purpose:	Mouse monoclonal antibody raised against human CD52.
Immunogen:	Human peripheral blood mononuclear cells and tonsil cells.
Clone:	HI186
Isotype:	IgG2b
Cross-Reactivity:	Human

Target Details

Target:	CD52
Alternative Name:	CD52 (CD52 Products)
Background:	Full Gene Name: CD52 Molecule Synonyms: CDW52

Target Details

Gene ID: 1043

Application Details

Application Notes: Flow Cytometry (5 uL/10⁶ cells)
Immunohistochemistry
The optimal working dilution should be determined by the end user.

Restrictions: For Research Use only

Handling

Format: Liquid

Buffer: In PBS, pH 7.4 (protein stabilizer, 0.09 % sodium azide).

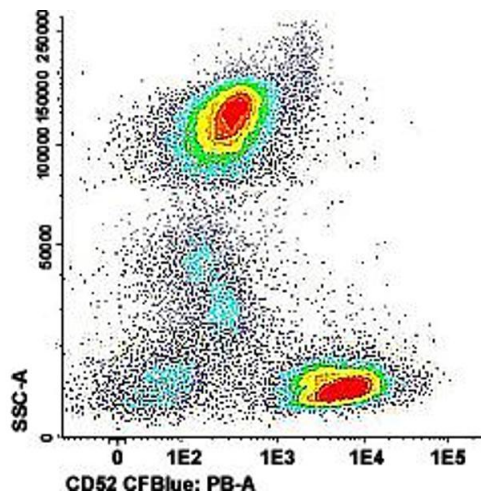
Preservative: Sodium azide

Precaution of Use: This product contains Sodium azide: a POISONOUS AND HAZARDOUS SUBSTANCE which should be handled by trained staff only.

Storage: 4 °C

Storage Comment: Store in the dark at 4°C.

Images



Flow Cytometry

Image 1. Flow cytometric analysis of human peripheral blood cells with CD52 monoclonal antibody, clone HI186 (CF-Blue).