



[Go to Product page](#)

Datasheet for ABIN5574682
anti-CD6 antibody (Biotin)

1 Image

Overview

Quantity:	100 µg
Target:	CD6
Reactivity:	Human
Host:	Mouse
Clonality:	Monoclonal
Conjugate:	This CD6 antibody is conjugated to Biotin
Application:	Flow Cytometry (FACS)

Product Details

Purpose:	Mouse monoclonal antibody raised against human CD6.
Immunogen:	Human T cells blast.
Clone:	MAE-1C10
Isotype:	IgG1
Cross-Reactivity:	Human

Target Details

Target:	CD6
Alternative Name:	CD6 (CD6 Products)
Background:	Full Gene Name: CD6 Molecule Synonyms: FLJ44171,TP120

Target Details

Gene ID: 923

Application Details

Application Notes: Flow Cytometry (1 $\mu\text{g}/10^6$ cells)
The optimal working dilution should be determined by the end user.

Restrictions: For Research Use only

Handling

Format: Liquid

Buffer: In PBS, pH 7.4 (protein stabilizer, 0.09 % sodium azide).

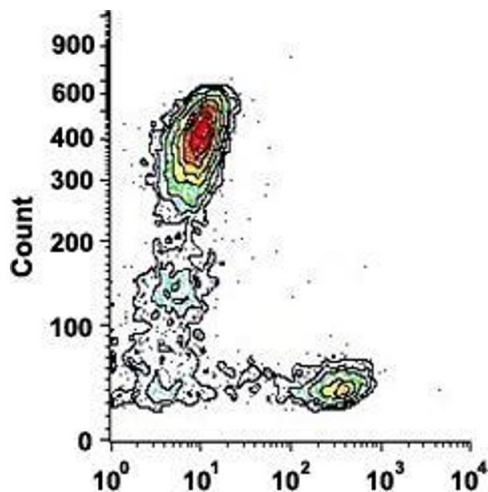
Preservative: Sodium azide

Precaution of Use: This product contains Sodium azide: a POISONOUS AND HAZARDOUS SUBSTANCE which should be handled by trained staff only.

Storage: 4 °C

Storage Comment: Store in the dark at 4°C. Avoid prolonged exposure to light.

Images



Flow Cytometry

Image 1. Flow cytometric analysis of human peripheral blood lymphocytes with CD6 monoclonal antibody, clone MAE-1C10 (Biotin) .