

Datasheet for ABIN5574975
anti-CDCA8 antibody (AA 200-250)[Go to Product page](#)

1 Image

Overview

Quantity:	100 µL
Target:	CDCA8
Binding Specificity:	AA 200-250
Reactivity:	Human, Mouse, Rat
Host:	Rabbit
Clonality:	Polyclonal
Conjugate:	This CDCA8 antibody is un-conjugated
Application:	Western Blotting (WB), Immunofluorescence (IF), Immunocytochemistry (ICC)

Product Details

Purpose:	Rabbit polyclonal antibody raised against synthetic peptide of CDCA8.
Immunogen:	A synthetic peptide corresponding to amino acids 200-250 of human CDCA8.
Specificity:	Immunogen has 92 % identity with mouse and rat proteins. This antibody is useful for Western blot, where a band can be seen ~38 KDa.
Cross-Reactivity:	Human, Mouse, Rat

Target Details

Target:	CDCA8
Alternative Name:	CDCA8 (CDCA8 Products)
Background:	Full Gene Name: cell division cycle associated 8

Target Details

	Synonyms: BOR,BOREALIN,FLJ10468,FLJ12042
Gene ID:	55143
Pathways:	Cell Division Cycle , M Phase

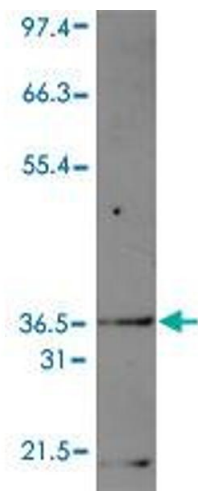
Application Details

Application Notes:	Immunocytochemistry (1:50-1:200) Immunofluorescence (1:50-1:200) Western Blot (2 µg/mL) The optimal working dilution should be determined by the end user.
Restrictions:	For Research Use only

Handling

Format:	Liquid
Buffer:	In Tris-glycine, 150 mM NaCl (0.05 % sodium azide)
Preservative:	Sodium azide
Precaution of Use:	This product contains Sodium azide: a POISONOUS AND HAZARDOUS SUBSTANCE which should be handled by trained staff only.
Storage:	4 °C,-20 °C
Storage Comment:	Store at 4°C for short term. For long term storage store at -20°C. Aliquot to avoid repeated freezing and thawing.

Images



Western Blotting

Image 1. Western blot on mouse kidney lysate with CDCA8 polyclonal antibody .