

Datasheet for ABIN5575010

Recombinant anti-Cadherin-16 antibody



[Go to Product page](#)

1 Image

Overview

Quantity:	100 µg
Target:	Cadherin-16 (CDH16)
Reactivity:	Human
Host:	Rabbit
Antibody Type:	Recombinant Antibody
Clonality:	Monoclonal
Conjugate:	This Cadherin-16 antibody is un-conjugated
Application:	Immunofluorescence (IF), Flow Cytometry (FACS), Immunohistochemistry (Paraffin-embedded Sections) (IHC (p))

Product Details

Purpose:	Rabbit recombinant monoclonal antibody raised against human CDH16.
Immunogen:	Original antibody is raised against recombinant protein corresponding to full length human CDH16.
Clone:	CDH16-1532R
Isotype:	IgG
Cross-Reactivity:	Human, Mouse, Rat

Target Details

Target:	Cadherin-16 (CDH16)
---------	---------------------

Target Details

Alternative Name:	CDH16 (CDH16 Products)
Background:	Full Gene Name: cadherin 16, KSP-cadherin
Gene ID:	1014

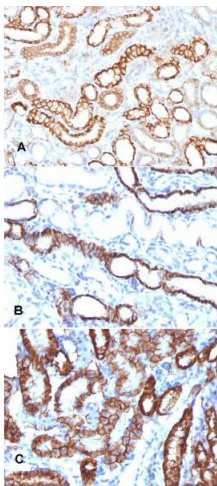
Application Details

Application Notes:	Flow Cytometry (0.5-1 µg/million cells) Immunofluorescence (1-2 µg/mL) Immunohistochemistry (Formalin/PFA-fixed paraffin-embedded sections) (0.5-1 µg/mL) The optimal working dilution should be determined by the end user.
Restrictions:	For Research Use only

Handling

Format:	Liquid
Buffer:	In 10 mM PBS (0.05 % BSA and 0.05 % azide).
Preservative:	Sodium azide
Precaution of Use:	This product contains Sodium azide: a POISONOUS AND HAZARDOUS SUBSTANCE which should be handled by trained staff only.
Storage:	4 °C
Storage Comment:	Store at 4°C.

Images



Immunohistochemistry

Image 1. Immunohistochemical staining (Formalin-fixed paraffin-embedded sections) of (A) human renal cell carcinoma (B) rat kidney and (C) mouse kidney with CDH16 recombinant monoclonal antibody, clone CDH16/1532R .