

Datasheet for ABIN5575239  
**anti-CELSR1 antibody (C-Term)**[Go to Product page](#)

## 1 Image

## Overview

Quantity:	50 µg
Target:	CELSR1
Binding Specificity:	C-Term
Reactivity:	Human, Gorilla
Host:	Rabbit
Clonality:	Polyclonal
Conjugate:	This CELSR1 antibody is un-conjugated
Application:	ELISA, Immunohistochemistry (Paraffin-embedded Sections) (IHC (p))

## Product Details

Purpose:	Rabbit polyclonal antibody raised against synthetic peptide of CELSR1.
Immunogen:	A synthetic peptide corresponding to 19 amino acids at C-terminus of human CELSR1.
Specificity:	BLAST analysis of the peptide immunogen showed no homology with other human proteins.
Cross-Reactivity:	Gorilla, Human
Cross-Reactivity (Details):	BLAST analysis of the peptide immunogen showed no homology with other human proteins.

## Target Details

Target:	CELSR1
Alternative Name:	CELSR1 ( <a href="#">CELSR1 Products</a> )
Background:	Full Gene Name: cadherin, EGF LAG seven-pass G-type receptor 1 (flamingo homolog,

Target Details

	Drosophila)
	Synonyms: CDHF9,DKFZp434P0729,FMI2,HFMI2,ME2
Gene ID:	9620
Pathways:	<a href="#">Tube Formation</a> , <a href="#">Asymmetric Protein Localization</a>

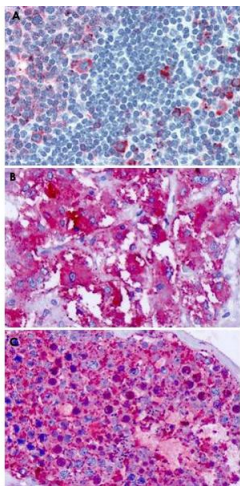
Application Details

Application Notes:	Immunohistochemistry (Formalin/PFA-fixed paraffin-embedded sections) (16-32 µg/mL) The optimal working dilution should be determined by the end user.
Restrictions:	For Research Use only

Handling

Format:	Liquid
Buffer:	In PBS (0.09 % sodium azide)
Preservative:	Sodium azide
Precaution of Use:	This product contains Sodium azide: a POISONOUS AND HAZARDOUS SUBSTANCE which should be handled by trained staff only.
Storage:	4 °C,-80 °C
Storage Comment:	Store at 4°C. For long term storage store at -80°C. Aliquot to avoid repeated freezing and thawing.

Images



**Immunohistochemistry**

**Image 1.** Immunohistochemical staining of formalin-fixed paraffin-embedded human tonsil (A), adrenal gland (B) and testis (C) with CELSR1 polyclonal antibody .