



[Go to Product page](#)

Datasheet for ABIN5575241
anti-CELSR2 antibody (N-Term)

1 Image

Overview

Quantity:	50 µg
Target:	CELSR2
Binding Specificity:	N-Term
Reactivity:	Human
Host:	Rabbit
Clonality:	Polyclonal
Conjugate:	This CELSR2 antibody is un-conjugated
Application:	Immunohistochemistry (Paraffin-embedded Sections) (IHC (p))

Product Details

Purpose:	Rabbit polyclonal antibody raised against synthetic peptide of CELSR2.
Immunogen:	A synthetic peptide corresponding to 20 amino acids at N-terminus of human CELSR2.
Specificity:	BLAST analysis of the peptide immunogen showed no homology with other human proteins.
Cross-Reactivity:	Human
Cross-Reactivity (Details):	BLAST analysis of the peptide immunogen showed no homology with other human proteins.

Target Details

Target:	CELSR2
Alternative Name:	CELSR2 (CELSR2 Products)
Background:	Full Gene Name: cadherin, EGF LAG seven-pass G-type receptor 2 (flamingo homolog,

Target Details

Drosophila)

Synonyms:

CDHF10,EGFL2,FLJ34118,FLJ42737,FLJ45143,FLJ45845,Flamingo1,KIAA0279,MEGF3

Gene ID: 1952

Application Details

Application Notes: Immunohistochemistry (Formalin/PFA-fixed paraffin-embedded sections) (16 µg/mL)

The optimal working dilution should be determined by the end user.

Restrictions: For Research Use only

Handling

Format: Liquid

Buffer: In PBS (0.09 % sodium azide)

Preservative: Sodium azide

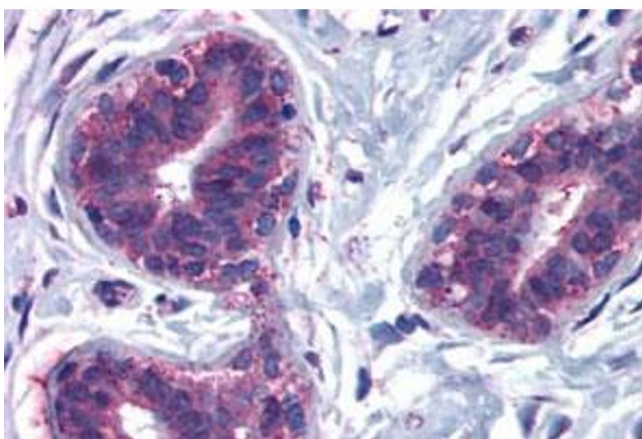
Precaution of Use: This product contains Sodium azide: a POISONOUS AND HAZARDOUS SUBSTANCE which should be handled by trained staff only.

Storage: 4 °C, -80 °C

Storage Comment: Store at 4°C. For long term storage store at -80°C.

Aliquot to avoid repeated freezing and thawing.

Images



Immunohistochemistry

Image 1. Immunohistochemical staining of human breast, lobular epithelium with CELSR2 polyclonal antibody . Immunohistochemistry of formalin-fixed, paraffin-embedded tissue after heat-induced antigen retrieval.