



[Go to Product page](#)

Datasheet for ABIN5575243  
**anti-CELSR2 antibody (C-Term)**

2 Images

Overview

Quantity:	50 µg
Target:	CELSR2
Binding Specificity:	C-Term
Reactivity:	Human, Mouse, Rat, Cow, Dog, Hamster, Horse, Monkey, Rabbit, Gibbon
Host:	Rabbit
Clonality:	Polyclonal
Conjugate:	This CELSR2 antibody is un-conjugated
Application:	Immunohistochemistry (Paraffin-embedded Sections) (IHC (p))

Product Details

Purpose:	Rabbit polyclonal antibody raised against synthetic peptide of CELSR2.
Immunogen:	A synthetic peptide corresponding to 18 amino acids at C-terminus of human CELSR2.
Specificity:	BLAST analysis of the peptide immunogen showed no homology with other human proteins.
Cross-Reactivity:	Cow, Dog, Gibbon, Hamster, Horse, Human, Monkey, Mouse, Rabbit, Rat
Cross-Reactivity (Details):	BLAST analysis of the peptide immunogen showed no homology with other human proteins.

Target Details

Target:	CELSR2
Alternative Name:	CELSR2 ( <a href="#">CELSR2 Products</a> )
Background:	Full Gene Name: cadherin, EGF LAG seven-pass G-type receptor 2 (flamingo homolog,

## Target Details

Drosophila)

Synonyms:

CDHF10,EGFL2,FLJ34118,FLJ42737,FLJ45143,FLJ45845,Flamingo1,KIAA0279,MEGF3

Gene ID: 1952

## Application Details

Application Notes: Immunohistochemistry (Formalin/PFA-fixed paraffin-embedded sections) (7 µg/mL)

The optimal working dilution should be determined by the end user.

Restrictions: For Research Use only

## Handling

Format: Liquid

Buffer: In PBS (0.09 % sodium azide)

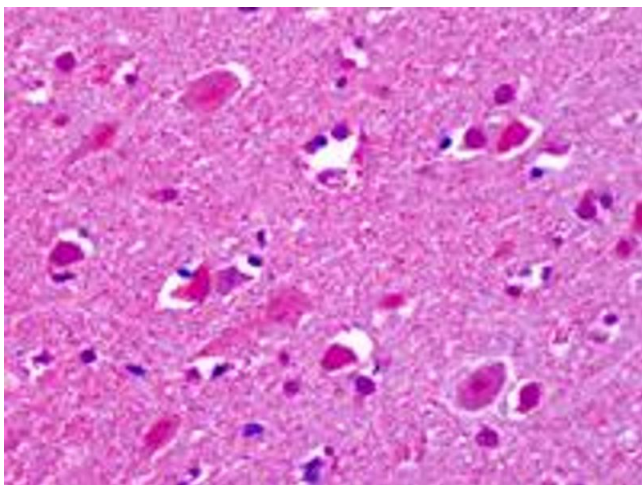
Preservative: Sodium azide

Precaution of Use: This product contains Sodium azide: a POISONOUS AND HAZARDOUS SUBSTANCE which should be handled by trained staff only.

Storage: 4 °C, -80 °C

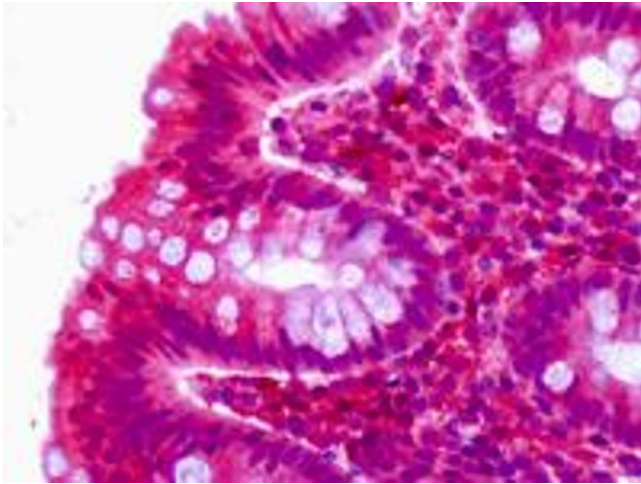
Storage Comment: Store at 4°C. For long term storage store at -80°C.  
Aliquot to avoid repeated freezing and thawing.

## Images



### Immunohistochemistry

**Image 1.** Immunohistochemistry (Formalin/PFA-fixed paraffin-embedded sections) of human brain cortex neurons with CELSR2 polyclonal antibody . Immunohistochemistry of formalin-fixed, paraffin-embedded tissue after heat-induced antigen retrieval.



### Immunohistochemistry

**Image 2.** Immunohistochemistry (Formalin/PFA-fixed paraffin-embedded sections) of human colon epithelium with CELSR2 polyclonal antibody . Immunohistochemistry of formalin-fixed, paraffin-embedded tissue after heat-induced antigen retrieval.