

Datasheet for ABIN5575246
anti-CELSR3 antibody (C-Term)[Go to Product page](#)

1 Image

Overview

| | |
|----------------------|---|
| Quantity: | 50 µg |
| Target: | CELSR3 |
| Binding Specificity: | C-Term |
| Reactivity: | Human, Gorilla |
| Host: | Rabbit |
| Clonality: | Polyclonal |
| Conjugate: | This CELSR3 antibody is un-conjugated |
| Application: | Immunohistochemistry (Paraffin-embedded Sections) (IHC (p)) |

Product Details

| | |
|-----------------------------|--|
| Purpose: | Rabbit polyclonal antibody raised against synthetic peptide of CELSR3. |
| Immunogen: | A synthetic peptide corresponding to 17 amino acids at C-terminus of human CELSR3. |
| Specificity: | BLAST analysis of the peptide immunogen showed no homology with other human proteins, except BICC1 (59 %). |
| Cross-Reactivity: | Gorilla, Human |
| Cross-Reactivity (Details): | BLAST analysis of the peptide immunogen showed no homology with other human proteins, except BICC1 (59 %). |

Target Details

| | |
|---------|--------|
| Target: | CELSR3 |
|---------|--------|

Target Details

| | |
|-------------------|---|
| Alternative Name: | CELSR3 (CELSR3 Products) |
| Background: | Full Gene Name: cadherin, EGF LAG seven-pass G-type receptor 3 (flamingo homolog, Drosophila) Synonyms: CDHF11,EGFL1,FMI1,HFMI1,MEGF2,RESDA1 |
| Gene ID: | 1951 |

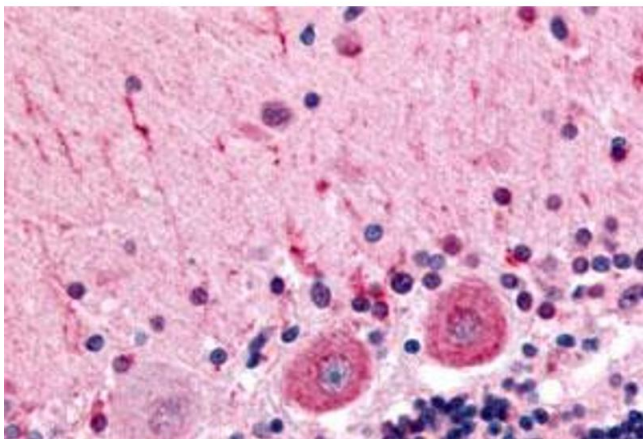
Application Details

| | |
|--------------------|--|
| Application Notes: | Immunohistochemistry (Formalin/PFA-fixed paraffin-embedded sections) (4-6 µg/mL) The optimal working dilution should be determined by the end user. |
| Restrictions: | For Research Use only |

Handling

| | |
|--------------------|--|
| Format: | Liquid |
| Buffer: | In PBS (0.09 % sodium azide) |
| Preservative: | Sodium azide |
| Precaution of Use: | This product contains Sodium azide: a POISONOUS AND HAZARDOUS SUBSTANCE which should be handled by trained staff only. |
| Storage: | 4 °C,-80 °C |
| Storage Comment: | Store at 4°C. For long term storage store at -80°C. Aliquot to avoid repeated freezing and thawing. |

Images



Immunohistochemistry

Image 1. Immunohistochemical staining of human brain, Purkinje neurons with CELSR3 polyclonal antibody . Immunohistochemistry of formalin-fixed, paraffin-embedded tissue after heat-induced antigen retrieval.