



[Go to Product page](#)

Datasheet for ABIN5575260

anti-CENPM antibody (Internal Region)

1 Image

Overview

Quantity:	100 µL
Target:	CENPM
Binding Specificity:	Internal Region
Reactivity:	Human
Host:	Rabbit
Clonality:	Polyclonal
Conjugate:	This CENPM antibody is un-conjugated
Application:	Western Blotting (WB), Immunofluorescence (IF)

Product Details

Purpose:	Rabbit polyclonal antibody raised against synthetic peptide of human CENPM.
Immunogen:	A synthetic peptide corresponding to internal region of human CENPM.
Sequence:	CDLEVEGFRA TMAQRLVRVL QICAGHVPGV SALNLLSLLR SSEGPSLEDL
Cross-Reactivity:	Human

Target Details

Target:	CENPM
Alternative Name:	CENPM (CENPM Products)
Background:	Full Gene Name: centromere protein M Synonyms: C22orf18,CENP-M,MGC861,PANE1,bK250D10.2

Target Details

Gene ID: 79019

NCBI Accession: [NM_024053](#)

Application Details

Application Notes: Immunofluorescence
Western Blot (0.2-1 µg/mL)
The optimal working dilution should be determined by the end user.

Restrictions: For Research Use only

Handling

Format: Liquid

Buffer: In PBS (2 % sucrose, 0.09 % sodium azide).

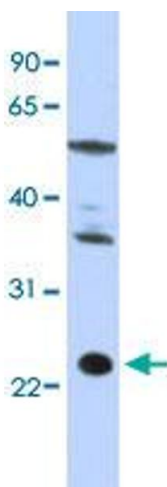
Preservative: Sodium azide

Precaution of Use: This product contains Sodium azide: a POISONOUS AND HAZARDOUS SUBSTANCE which should be handled by trained staff only.

Storage: 4 °C, -20 °C

Storage Comment: Store at 4°C. For long term storage store at -20°C.
Aliquot to avoid repeated freezing and thawing.

Images



Western Blotting

Image 1. Western Blot analysis of HepG2 cell lysate with CENPM polyclonal antibody at 0.2-1 µg/mL working concentration.