

Datasheet for ABIN5575320  
**anti-Complement Factor H antibody**[Go to Product page](#)

## 1 Image

## Overview

Quantity:	50 µg
Target:	Complement Factor H (CFH)
Reactivity:	Human
Host:	Mouse
Clonality:	Monoclonal
Conjugate:	This Complement Factor H antibody is un-conjugated
Application:	Western Blotting (WB), ELISA, Immunoprecipitation (IP), Flow Cytometry (FACS), Immunohistochemistry (Paraffin-embedded Sections) (IHC (p))

## Product Details

Purpose:	Mouse monoclonal antibody raised against human CFH.
Immunogen:	Human CFH
Clone:	OX-24
Isotype:	IgG1
Cross-Reactivity:	Human

## Target Details

Target:	Complement Factor H (CFH)
Alternative Name:	CFH ( <a href="#">CFH Products</a> )
Background:	Full Gene Name: complement factor H

## Target Details

Synonyms: ARMD4,ARMS1,CFHL3,FH,FHL1,HF,HF1,HF2,HUS,MGC88246

Gene ID: 3075

Pathways: [Complement System](#), [Cellular Response to Molecule of Bacterial Origin](#)

## Application Details

Application Notes: ELISA  
Flow Cytometry  
Immunohistochemistry (Formalin/PFA-fixed paraffin-embedded sections) (20 µg/mL)  
Immunoprecipitation  
Western Blot  
The optimal working dilution should be determined by the end user.

Restrictions: For Research Use only

## Handling

Format: Liquid

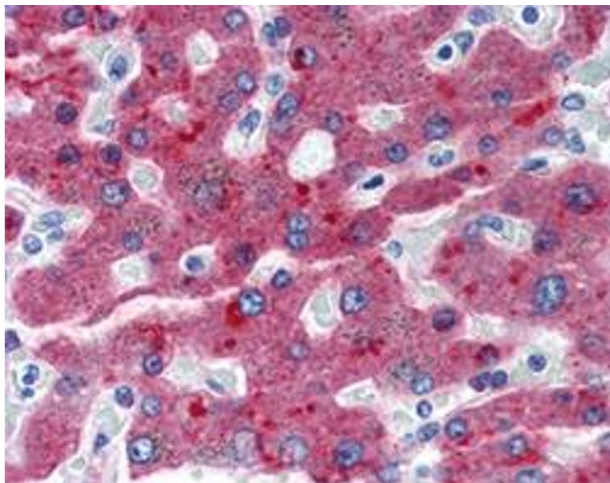
Buffer: In PBS (0.02 % sodium azide).

Preservative: Sodium azide

Precaution of Use: This product contains Sodium azide: a POISONOUS AND HAZARDOUS SUBSTANCE which should be handled by trained staff only.

Storage: 4 °C, -20 °C

Storage Comment: Store at 4°C. For long term storage store at -20°C.  
Aliquot to avoid repeated freezing and thawing.



#### Immunohistochemistry

**Image 1.** Immunohistochemical staining (Formalin-fixed paraffin-embedded sections) of human liver with CFH monoclonal antibody, clone OX-24 at 20 ug/mL working concentration.