



[Go to Product page](#)

Datasheet for ABIN5575379
anti-CHCHD1 antibody

3 Images

Overview

Quantity:	100 µL
Target:	CHCHD1
Reactivity:	Human
Host:	Rabbit
Clonality:	Polyclonal
Conjugate:	This CHCHD1 antibody is un-conjugated
Application:	Western Blotting (WB), Immunofluorescence (IF), Immunohistochemistry (Paraffin-embedded Sections) (IHC (p))

Product Details

Purpose:	Rabbit polyclonal antibody raised against recombinant CHCHD1.
Immunogen:	Recombinant protein corresponding to amino acids of human CHCHD1.
Sequence:	MATPSLRGRL ARFGNPRKPV LKPNKPLILA NRVGERRREK GEATCITEMS VMMACWKQN
Isotype:	IgG
Cross-Reactivity:	Human

Target Details

Target:	CHCHD1
Alternative Name:	CHCHD1 (CHCHD1 Products)
Background:	Full Gene Name: coiled-coil-helix-coiled-coil-helix domain containing 1

Target Details

Synonyms: C10orf34,C2360,FLJ25854

Gene ID: 118487

Application Details

Application Notes: Immunohistochemistry (1:500-1:1000)
Western Blot (1:250-1:500)
Immunofluorescence (1-4 µg/mL)
The optimal working dilution should be determined by the end user.

Restrictions: For Research Use only

Handling

Format: Liquid

Buffer: In PBS, pH 7.2 (40 % glycerol, 0.02 % sodium azide)

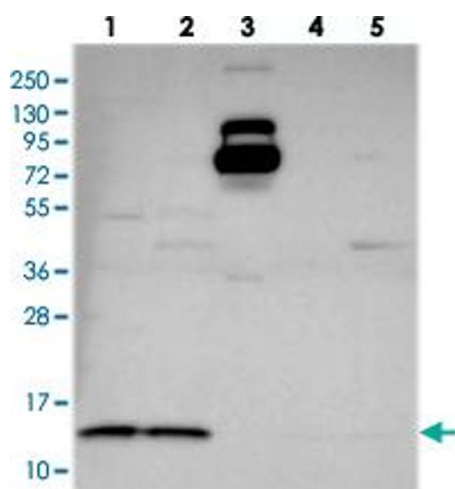
Preservative: Sodium azide

Precaution of Use: This product contains Sodium azide: a POISONOUS AND HAZARDOUS SUBSTANCE which should be handled by trained staff only.

Storage: 4 °C, -20 °C

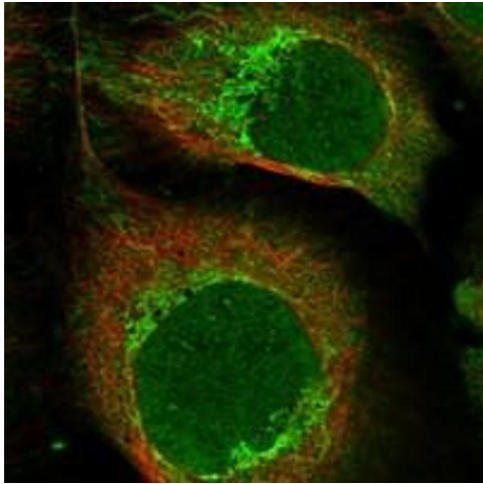
Storage Comment: Store at 4°C. For long term storage store at -20°C.
Aliquot to avoid repeated freezing and thawing.

Images



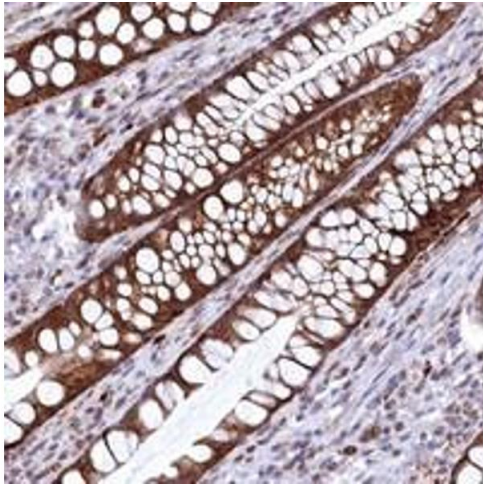
Western Blotting

Image 1. Western blot analysis of Lane 1: RT-4, Lane 2: U-251 MG, Lane 3: Human Plasma, Lane 4: Liver, Lane 5: Tonsil with CHCHD1 polyclonal antibody at 1:250-1:500 dilution.



Immunofluorescence

Image 2. Immunofluorescent staining of human cell line U-2 OS with CHCHD1 polyclonal antibody at 1-4 ug/mL dilution shows positivity in nucleoli, nucleus but not nucleoli and mitochondria.



Immunohistochemistry

Image 3. Immunohistochemical staining of human rectum with CHCHD1 polyclonal antibody shows strong cytoplasmic positivity in glandular cells at 1:500-1:1000 dilution.