



[Go to Product page](#)

Datasheet for ABIN5575386
anti-CHCHD5 antibody

2 Images

Overview

Quantity:	100 µL
Target:	CHCHD5
Reactivity:	Human
Host:	Rabbit
Clonality:	Polyclonal
Conjugate:	This CHCHD5 antibody is un-conjugated
Application:	Western Blotting (WB), Immunohistochemistry (Paraffin-embedded Sections) (IHC (p))

Product Details

Purpose:	Rabbit polyclonal antibody raised against recombinant CHCHD5.
Immunogen:	Recombinant protein corresponding to amino acids of human CHCHD5.
Sequence:	MQAALEVTAR YCGRELEQYG QCVAAKPESW QRDCHYLKMS IAQCTSSHPI IRQIRQACAQ PFEAFEECLR QNEAAVGNCA EHMRRFLQCA EQVQPPRSPA T
Isotype:	IgG
Cross-Reactivity:	Human

Target Details

Target:	CHCHD5
Alternative Name:	CHCHD5 (CHCHD5 Products)
Background:	Full Gene Name: coiled-coil-helix-coiled-coil-helix domain containing 5

Target Details

Synonyms: C2orf9,FLJ39671,MGC11104

Gene ID: 84269

Application Details

Application Notes: Immunohistochemistry (1:20-1:50)
Western Blot (1:250-1:500)
The optimal working dilution should be determined by the end user.

Restrictions: For Research Use only

Handling

Format: Liquid

Buffer: In PBS, pH 7.2 (40 % glycerol, 0.02 % sodium azide)

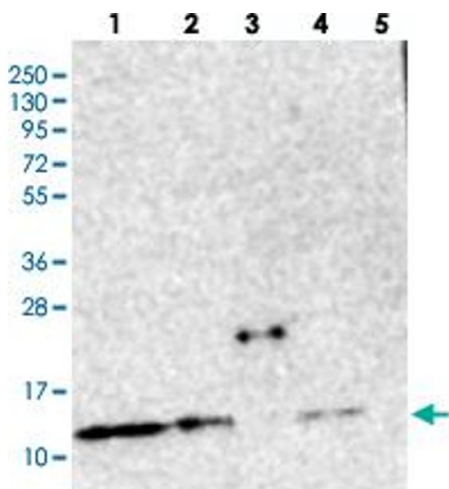
Preservative: Sodium azide

Precaution of Use: This product contains Sodium azide: a POISONOUS AND HAZARDOUS SUBSTANCE which should be handled by trained staff only.

Storage: 4 °C,-20 °C

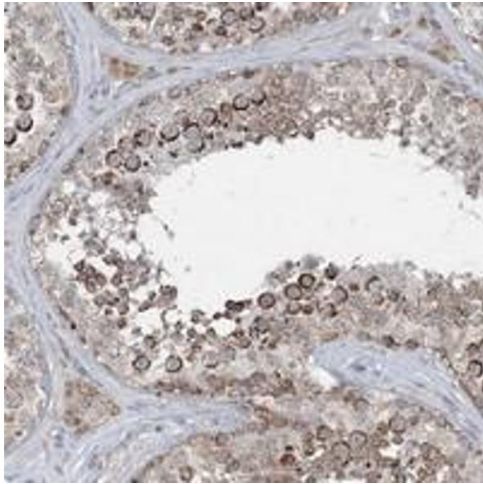
Storage Comment: Store at 4°C. For long term storage store at -20°C.
Aliquot to avoid repeated freezing and thawing.

Images



Western Blotting

Image 1. Western blot analysis of Lane 1: RT-4, Lane 2: U-251 MG, Lane 3: Human Plasma, Lane 4: Liver, Lane 5: Tonsil with CHCHD5 polyclonal antibody at 1:250-1:500 dilution.



Immunohistochemistry

Image 2. Immunohistochemical staining of human testis with CHCHD5 polyclonal antibody shows strong cytoplasmic positivity in subsets of cells in seminiferous ducts at 1:20-1:50 dilution.