



Datasheet for ABIN5575474

## anti-Muscarinic Acetylcholine Receptor M2 antibody (Cytoplasmic Domain)



[Go to Product page](#)

### 1 Image

#### Overview

Quantity:	50 µg
Target:	Muscarinic Acetylcholine Receptor M2 (CHRM2)
Binding Specificity:	Cytoplasmic Domain
Reactivity:	Human, Mouse, Rat, Cow, Dog, Pig, Monkey, Guinea Pig, Sheep, Rabbit, Hamster, Horse, Chimpanzee, Gorilla, Orang-Utan
Host:	Rabbit
Clonality:	Polyclonal
Conjugate:	This Muscarinic Acetylcholine Receptor M2 antibody is un-conjugated
Application:	Immunohistochemistry (Paraffin-embedded Sections) (IHC (p))

#### Product Details

Purpose:	Rabbit polyclonal antibody raised against synthetic peptide of CHRM2.
Immunogen:	A synthetic peptide corresponding to cytoplasmic domain of human CHRM2.
Specificity:	BLAST analysis of the peptide immunogen showed no homology with other human proteins.
Cross-Reactivity:	Chimpanzee, Cow, Dog, Gorilla, Guinea Pig, Hamster, Horse, Human, Monkey, Mouse, Orang-Utan, Pig, Rabbit, Rat, Sheep
Cross-Reactivity (Details):	BLAST analysis of the peptide immunogen showed no homology with other human proteins.

#### Target Details

Target:	Muscarinic Acetylcholine Receptor M2 (CHRM2)
---------	--

## Target Details

Alternative Name:	CHRM2 ( <a href="#">CHRM2 Products</a> )
Background:	Full Gene Name: cholinergic receptor, muscarinic 2 Synonyms: FLJ43243, HM2, MGC120006, MGC120007
Gene ID:	1129

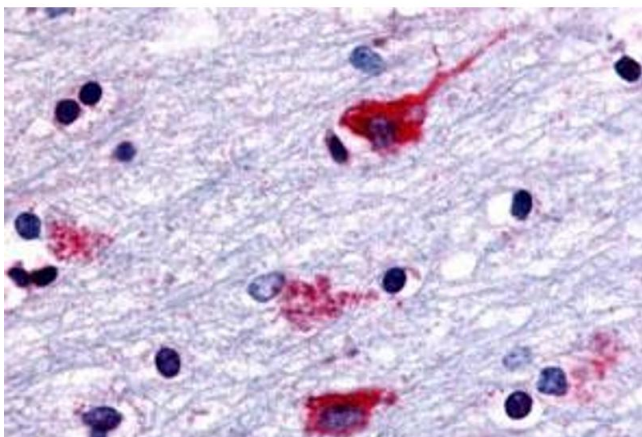
## Application Details

Application Notes:	Immunohistochemistry (Formalin/PFA-fixed paraffin-embedded sections) (6-15 µg/mL) The optimal working dilution should be determined by the end user.
Restrictions:	For Research Use only

## Handling

Format:	Liquid
Buffer:	In PBS (0.09 % sodium azide)
Preservative:	Sodium azide
Precaution of Use:	This product contains Sodium azide: a POISONOUS AND HAZARDOUS SUBSTANCE which should be handled by trained staff only.
Storage:	4 °C, -80 °C
Storage Comment:	Store at 4°C. For long term storage store at -80°C. Aliquot to avoid repeated freezing and thawing.

## Images



### Immunohistochemistry

**Image 1.** Immunohistochemical staining of human brain, neurons and glia with CHRM2 polyclonal antibody . Immunohistochemistry of formalin-fixed, paraffin-embedded tissue after heat-induced antigen retrieval.