



[Go to Product page](#)

Datasheet for ABIN5575591  
**anti-CLIC1 antibody (N-Term)**

1 Image

### Overview

Quantity:	100 µg
Target:	CLIC1
Binding Specificity:	N-Term
Reactivity:	Human
Host:	Rabbit
Clonality:	Polyclonal
Conjugate:	This CLIC1 antibody is un-conjugated
Application:	Western Blotting (WB), ELISA, Immunohistochemistry (Paraffin-embedded Sections) (IHC (p))

### Product Details

Purpose:	Rabbit polyclonal antibody raised against synthetic peptide of CLIC1.
Immunogen:	A synthetic peptide corresponding to 14 amino acids at N-terminus of human CLIC1.
Cross-Reactivity:	Human

### Target Details

Target:	CLIC1
Alternative Name:	CLIC1 ( <a href="#">CLIC1 Products</a> )
Background:	Full Gene Name: chloride intracellular channel 1 Synonyms: G6,NCC27
Gene ID:	1192

## Application Details

---

Application Notes: ELISA (1:20000-1:80000)  
Western Blot (1:200-1:500)  
Immunohistochemistry (1:50-1:250)  
The optimal working dilution should be determined by the end user.

---

Restrictions: For Research Use only

---

## Handling

---

Format: Liquid

---

Buffer: In buffer containing 0.02 % sodium azide

---

Preservative: Sodium azide

---

Precaution of Use: This product contains Sodium azide: a POISONOUS AND HAZARDOUS SUBSTANCE which should be handled by trained staff only.

---

Storage: 4 °C, -20 °C

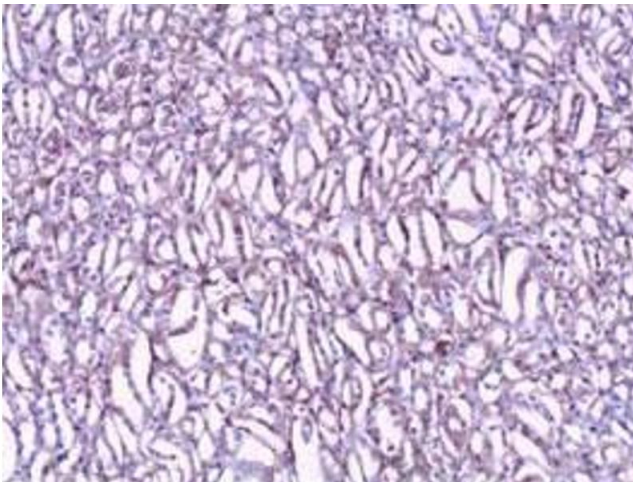
---

Storage Comment: Store at 4°C for three months. For long term storage store at -20°C.  
Aliquot to avoid repeated freezing and thawing.

---

## Images

---



### Immunohistochemistry

**Image 1.** Immunohistochemical staining of formalin-fixed paraffin-embedded human kidney tissue showing nuclear and cytoplasmic staining with CLIC1 polyclonal antibody at 1 : 100 dilution.