

Datasheet for ABIN5575596
anti-CLIC5 antibody (C-Term)[Go to Product page](#)

2 Images

Overview

Quantity:	100 µL
Target:	CLIC5
Binding Specificity:	C-Term
Reactivity:	Human
Host:	Rabbit
Clonality:	Polyclonal
Conjugate:	This CLIC5 antibody is un-conjugated
Application:	Western Blotting (WB), Immunohistochemistry (Paraffin-embedded Sections) (IHC (p))

Product Details

Purpose:	Rabbit polyclonal antibody raised against synthetic peptide of human CLIC5.
Immunogen:	A synthetic peptide corresponding to C-terminus of human CLIC5.
Sequence:	YRNYDIPAEM TGLWRYLKNA YARDEFTNTC AADSEIELAY ADVAKRLSRS
Cross-Reactivity:	Human

Target Details

Target:	CLIC5
Alternative Name:	CLIC5 (CLIC5 Products)
Background:	Full Gene Name: chloride intracellular channel 5 Synonyms: CLIC5B,FLJ90663,MST130,MSTP130,dJ447E21.4

Target Details

Gene ID:	53405
NCBI Accession:	NM_016929
Pathways:	Sensory Perception of Sound

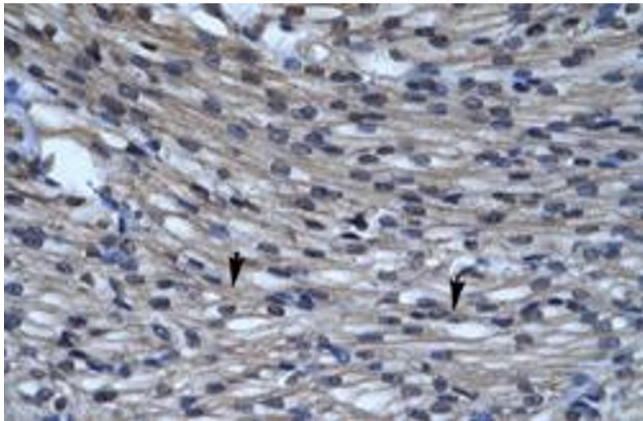
Application Details

Application Notes:	Immunohistochemistry (Formalin/PFA-fixed paraffin-embedded sections) (4-8 µg/mL) Western Blot (0.2-1 µg/mL) The optimal working dilution should be determined by the end user.
Restrictions:	For Research Use only

Handling

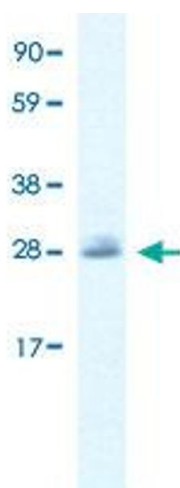
Format:	Liquid
Buffer:	In PBS (2 % sucrose, 0.09 % sodium azide).
Preservative:	Sodium azide
Precaution of Use:	This product contains Sodium azide: a POISONOUS AND HAZARDOUS SUBSTANCE which should be handled by trained staff only.
Storage:	4 °C, -20 °C
Storage Comment:	Store at 4°C. For long term storage store at -20°C. Aliquot to avoid repeated freezing and thawing.

Images



Immunohistochemistry

Image 1. Immunohistochemical staining (Formalin-fixed paraffin-embedded sections) of human heart with CLIC5 polyclonal antibody at 4-8 ug/mL working concentration.



Western Blotting

Image 2. Western Blot analysis of Jurkat cell lysate with CLIC5 polyclonal antibody at 0.2-1 ug/mL working concentration.