



[Go to Product page](#)

Datasheet for ABIN5575605  
**anti-CLMN antibody**

1 Image

### Overview

Quantity:	100 µL
Target:	CLMN
Reactivity:	Human
Host:	Rabbit
Clonality:	Polyclonal
Conjugate:	This CLMN antibody is un-conjugated
Application:	Immunohistochemistry (Paraffin-embedded Sections) (IHC (p))

### Product Details

Purpose:	Rabbit polyclonal antibody raised against recombinant CLMN.
Immunogen:	Recombinant protein corresponding to amino acids of human CLMN.
Sequence:	FEGSPRVAKE SLRQDGHVLA VEVAEEKEQK QESSKIPES SDKVAGDIFL VEGTNNNSQS SSCNGALEST ARHDEESHSL SPPGENTVMA DSFQIKVNLMTVEALEEG
Isotype:	IgG
Cross-Reactivity:	Human

### Target Details

Target:	CLMN
Alternative Name:	CLMN ( <a href="#">CLMN Products</a> )
Background:	Full Gene Name: calmin (calponin-like, transmembrane)

## Target Details

Synonyms: FLJ12383,FLJ43048,KIAA0500,KIAA1188

Gene ID: 79789

## Application Details

Application Notes: Immunohistochemistry (1:50-1:200)  
The optimal working dilution should be determined by the end user.

Restrictions: For Research Use only

## Handling

Format: Liquid

Buffer: In PBS, pH 7.2 (40 % glycerol, 0.02 % sodium azide)

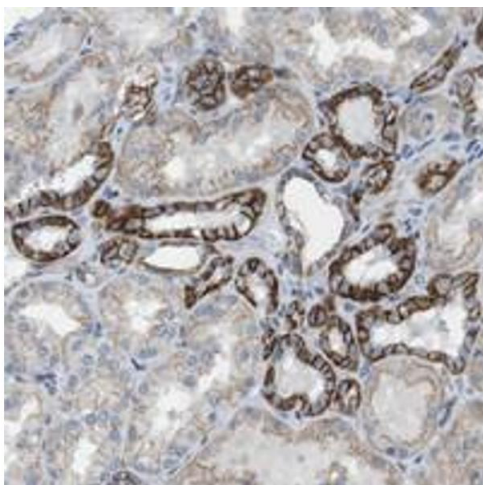
Preservative: Sodium azide

Precaution of Use: This product contains Sodium azide: a POISONOUS AND HAZARDOUS SUBSTANCE which should be handled by trained staff only.

Storage: 4 °C,-20 °C

Storage Comment: Store at 4°C. For long term storage store at -20°C.  
Aliquot to avoid repeated freezing and thawing.

## Images



### Immunohistochemistry

**Image 1.** Immunohistochemical staining of human kidney with CLMN polyclonal antibody shows strong membranous positivity in cells in tubules.