

Datasheet for ABIN5575655

**anti-CTD Nuclear Envelope Phosphatase 1 Regulatory Subunit 1 (CNEP1R1) antibody**[Go to Product page](#)**1** Image

## Overview

Quantity:	100 µL
Target:	CTD Nuclear Envelope Phosphatase 1 Regulatory Subunit 1 (CNEP1R1)
Reactivity:	Human
Host:	Rabbit
Clonality:	Polyclonal
Conjugate:	Un-conjugated
Application:	Immunohistochemistry (Paraffin-embedded Sections) (IHC (p))

## Product Details

Purpose:	Rabbit polyclonal antibody raised against recombinant CNEP1R1.
Immunogen:	Recombinant protein corresponding to amino acids of human CNEP1R1.
Sequence:	MNSLEQAEDL KAFERRLTEY IHCLQPATGR WRSVLLHII
Isotype:	IgG
Cross-Reactivity:	Human

## Target Details

Target:	CTD Nuclear Envelope Phosphatase 1 Regulatory Subunit 1 (CNEP1R1)
Alternative Name:	CNEP1R1 ( <a href="#">CNEP1R1 Products</a> )
Background:	Full Gene Name: CTD nuclear envelope phosphatase 1 regulatory subunit 1 Synonyms: C16orf69, NEP1-R1, TMEM188, TMP125

## Target Details

Gene ID: 255919

## Application Details

Application Notes: Immunohistochemistry (1:20-1:50)  
The optimal working dilution should be determined by the end user.

Restrictions: For Research Use only

## Handling

Format: Liquid

Buffer: In PBS, pH 7.2 (40 % glycerol, 0.02 % sodium azide)

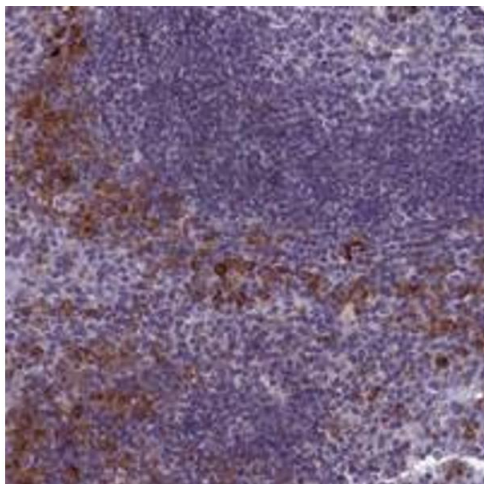
Preservative: Sodium azide

Precaution of Use: This product contains Sodium azide: a POISONOUS AND HAZARDOUS SUBSTANCE which should be handled by trained staff only.

Storage: 4 °C, -20 °C

Storage Comment: Store at 4°C. For long term storage store at -20°C.  
Aliquot to avoid repeated freezing and thawing.

## Images



### Immunohistochemistry

**Image 1.** Immunohistochemical staining of human tonsil with CNEP1R1 polyclonal antibody shows strong cytoplasmic positivity in subsets of cells outside germinal center at 1:20-1:50 dilution.