

Datasheet for ABIN5575669
anti-CNN1 antibody (C-Term)

2 Images

[Go to Product page](#)

Overview

Quantity:	100 µL
Target:	CNN1
Binding Specificity:	C-Term
Reactivity:	Human, Mouse
Host:	Rabbit
Clonality:	Monoclonal
Application:	Western Blotting (WB), Immunocytochemistry (ICC)

Product Details

Purpose:	Recombinant rabbit monoclonal antibody raised against of human CNN1.
Immunogen:	Original antibody is raised against a synthetic peptide corresponding to C-terminus of human CNN1.
Clone:	RM262
Isotype:	IgG
Cross-Reactivity:	Human, Mouse

Target Details

Target:	CNN1
Alternative Name:	CNN1 (CNN1 Products)
Background:	Full Gene Name: calponin 1, basic, smooth muscle

Target Details

	Synonyms: SMCC,Sm-Calp
Gene ID:	1264

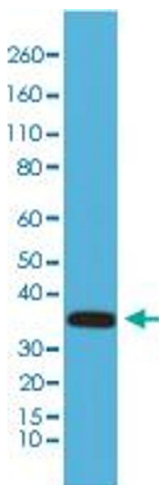
Application Details

Application Notes:	Immunocytochemistry (1:100-1:200) Western Blot (1:1000-1:2000) The optimal working dilution should be determined by the end user.
Restrictions:	For Research Use only

Handling

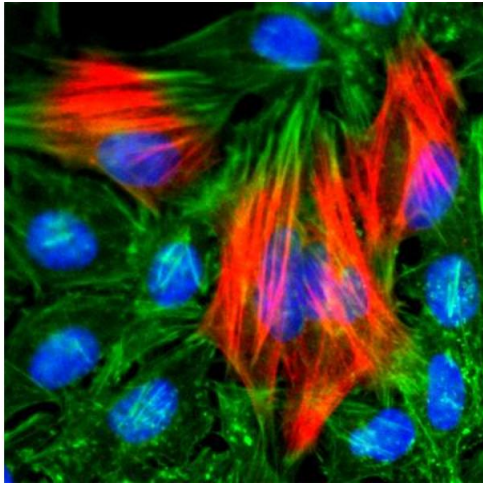
Format:	Liquid
Buffer:	In PBS (50 % glycerol, 1 % BSA, 0.09 % sodium azide)
Preservative:	Sodium azide
Precaution of Use:	This product contains Sodium azide: a POISONOUS AND HAZARDOUS SUBSTANCE which should be handled by trained staff only.
Storage:	-20 °C
Storage Comment:	Store at -20°C. Aliquot to avoid repeated freezing and thawing.

Images



Western Blotting

Image 1. Western blot analysis of mouse heart tissue lysates with CNN1 monoclonal antibody, clone RM262 .



Immunocytochemistry

Image 2. Immunocytochemistry staining of HeLa cells with CNN1 monoclonal antibody, clone RM262 (Red). Actin filaments have been labeled with fluorescein phalloidin (Green), and nucleus stained with DAPI (Blue).