

Datasheet for ABIN5575674
anti-CNN1 antibody (AA 150-250)[Go to Product page](#)

2 Images

Overview

Quantity:	100 µg
Target:	CNN1
Binding Specificity:	AA 150-250
Reactivity:	Human
Host:	Rabbit
Clonality:	Polyclonal
Conjugate:	This CNN1 antibody is un-conjugated
Application:	Western Blotting (WB), Immunohistochemistry (Paraffin-embedded Sections) (IHC (p)), ELISA

Product Details

Purpose:	Rabbit polyclonal antibody raised against synthetic peptide of CNN1.
Immunogen:	A synthetic peptide corresponding to amino acids 150-250 of human CNN1.
Cross-Reactivity:	Human

Target Details

Target:	CNN1
Alternative Name:	CNN1 (CNN1 Products)
Background:	Full Gene Name: calponin 1, basic, smooth muscle Synonyms: SMCC,Sm-Calp
Gene ID:	1264

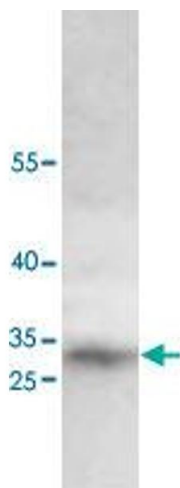
Application Details

Application Notes:	ELISA (1:1000-1:10000) Western Blot (1:500-1:1000) Immunohistochemistry (1:50-1:500) The optimal working dilution should be determined by the end user.
Restrictions:	For Research Use only

Handling

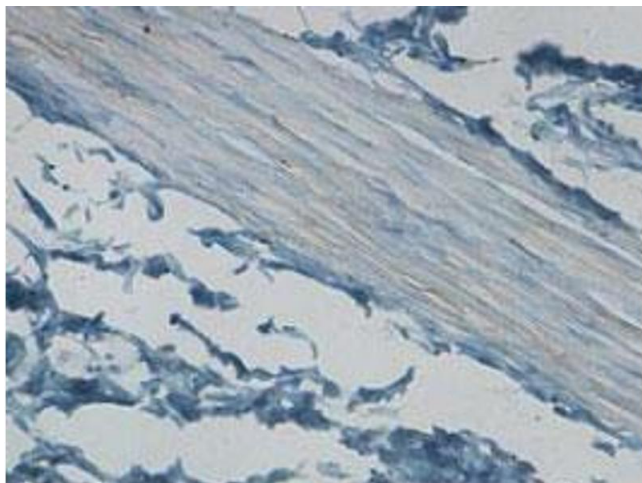
Format:	Liquid
Buffer:	In buffer containing 0.02 % sodium azide
Preservative:	Sodium azide
Precaution of Use:	This product contains Sodium azide: a POISONOUS AND HAZARDOUS SUBSTANCE which should be handled by trained staff only.
Storage:	4 °C,-20 °C
Storage Comment:	Store at 4°C for three months. For long term storage store at -20°C. Aliquot to avoid repeated freezing and thawing.

Images



Western Blotting

Image 1. Western blot analysis of human fetal stomach lysate with CNN1 polyclonal antibody at 1 : 1000 dilution.



Immunohistochemistry

Image 2. Immunohistochemical staining of formalin-fixed paraffin-embedded human stomach tissue showing cytoplasmic staining with CNN1 polyclonal antibody at 1 : 100 dilution.