

Datasheet for ABIN5575692

## anti-CNPY1 antibody



[Go to Product page](#)

### 1 Image

#### Overview

Quantity:	100 µL
Target:	CNPY1
Reactivity:	Human
Host:	Rabbit
Clonality:	Polyclonal
Conjugate:	This CNPY1 antibody is un-conjugated
Application:	Immunohistochemistry (Paraffin-embedded Sections) (IHC (p))

#### Product Details

Purpose:	Rabbit polyclonal antibody raised against recombinant CNPY1.
Immunogen:	Recombinant protein corresponding to amino acids of human CNPY1.
Sequence:	DPVTKERTFK RFAPRKGDKI YQEFKKLYFY SDAYRPLKFA CETIIEEYED EISSLIAQET HYLADKLCSE KSDLCETSAN H
Isotype:	IgG
Cross-Reactivity:	Human

#### Target Details

Target:	CNPY1
Alternative Name:	CNPY1 ( <a href="#">CNPY1 Products</a> )
Background:	Full Gene Name: canopy 1 homolog (zebrafish)

## Target Details

Synonyms: MGC125606

Gene ID: 285888

## Application Details

Application Notes: Immunohistochemistry (1:500-1:1000)  
The optimal working dilution should be determined by the end user.

Restrictions: For Research Use only

## Handling

Format: Liquid

Buffer: In PBS, pH 7.2 (40 % glycerol, 0.02 % sodium azide)

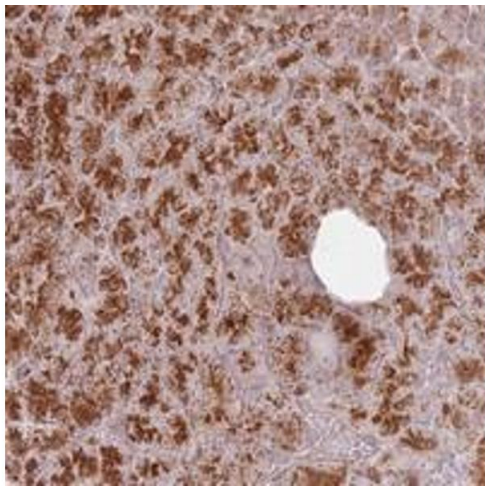
Preservative: Sodium azide

Precaution of Use: This product contains Sodium azide: a POISONOUS AND HAZARDOUS SUBSTANCE which should be handled by trained staff only.

Storage: 4 °C, -20 °C

Storage Comment: Store at 4°C. For long term storage store at -20°C.  
Aliquot to avoid repeated freezing and thawing.

## Images



### Immunohistochemistry

**Image 1.** Immunohistochemical staining of human pancreas with CNPY1 polyclonal antibody shows strong cytoplasmic and nucleolar positivity in exocrine glandular cells at 1:500-1:1000 dilution.