

Datasheet for ABIN5575781
anti-COBL antibody



[Go to Product page](#)

1 Image

Overview

Quantity:	100 µL
Target:	COBL
Reactivity:	Human
Host:	Rabbit
Clonality:	Polyclonal
Conjugate:	This COBL antibody is un-conjugated
Application:	Immunohistochemistry (Paraffin-embedded Sections) (IHC (p))

Product Details

Purpose:	Rabbit polyclonal antibody raised against recombinant COBL.
Immunogen:	Recombinant protein corresponding to amino acids of human COBL.
Sequence:	KSAHHEGRNP LGEGRNQPT MGMGHVRVPA AHTTEVTFLK PQRRTSSQYV ASAIKRIGA PKVHADVVRP HGyAEKGYAG KAPVLAAPPV TVKDDRTSSP HSETQGWKDG AQWPCVTPPN NHGEDLAVGA
Isotype:	IgG
Cross-Reactivity:	Human

Target Details

Target:	COBL
Alternative Name:	COBL (COBL Products)

Target Details

Background:	Full Gene Name: cordon-bleu homolog (mouse) Synonyms: DKFZp686G13227,KIAA0633,MGC131893
Gene ID:	23242

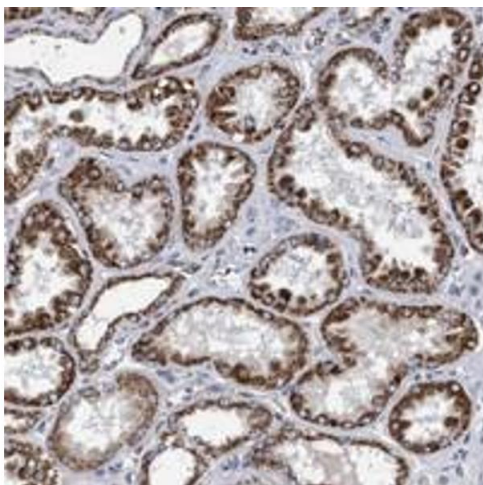
Application Details

Application Notes:	Immunohistochemistry (1:200-1:500) The optimal working dilution should be determined by the end user.
Restrictions:	For Research Use only

Handling

Format:	Liquid
Buffer:	In PBS, pH 7.2 (40 % glycerol, 0.02 % sodium azide)
Preservative:	Sodium azide
Precaution of Use:	This product contains Sodium azide: a POISONOUS AND HAZARDOUS SUBSTANCE which should be handled by trained staff only.
Storage:	4 °C,-20 °C
Storage Comment:	Store at 4°C. For long term storage store at -20°C. Aliquot to avoid repeated freezing and thawing.

Images



Immunohistochemistry

Image 1. Immunohistochemical staining of human kidney with COBL polyclonal antibody shows strong granular cytoplasmic positivity in tubular cells at 1:200-1:500 dilution.