



[Go to Product page](#)

Datasheet for ABIN5575783
anti-COBLL1 antibody (N-Term)

2 Images

Overview

Quantity:	100 µL
Target:	COBLL1
Binding Specificity:	N-Term
Reactivity:	Human
Host:	Rabbit
Clonality:	Polyclonal
Conjugate:	This COBLL1 antibody is un-conjugated
Application:	Western Blotting (WB), Immunohistochemistry (Paraffin-embedded Sections) (IHC (p))

Product Details

Purpose:	Rabbit polyclonal antibody raised against synthetic peptide of human COBLL1.
Immunogen:	A synthetic peptide corresponding to N-terminus of human COBLL1.
Sequence:	SAPATPLVNK HRPTFTRSNT ISKPYISNTL PSDAPKKRRA PLPPMPASQS
Cross-Reactivity:	Human

Target Details

Target:	COBLL1
Alternative Name:	COBLL1 (COBLL1 Products)
Background:	Full Gene Name: COBL-like 1 Synonyms: COBLR1,KIAA0977

Target Details

Gene ID: 22837

NCBI Accession: [NM_014900](#)

Application Details

Application Notes: Immunohistochemistry (Formalin/PFA-fixed paraffin-embedded sections) (4-8 µg/mL)
Western Blot (0.5 µg/mL)
The optimal working dilution should be determined by the end user.

Restrictions: For Research Use only

Handling

Format: Liquid

Buffer: In PBS (2 % sucrose, 0.09 % sodium azide).

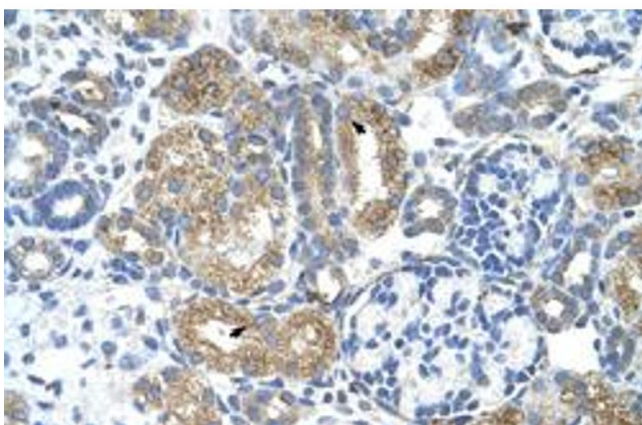
Preservative: Sodium azide

Precaution of Use: This product contains Sodium azide: a POISONOUS AND HAZARDOUS SUBSTANCE which should be handled by trained staff only.

Storage: 4 °C, -20 °C

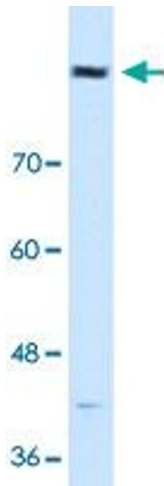
Storage Comment: Store at 4°C. For long term storage store at -20°C.
Aliquot to avoid repeated freezing and thawing.

Images



Immunohistochemistry

Image 1. Immunohistochemical staining (Formalin-fixed paraffin-embedded sections) of human kidney with COBL1 polyclonal antibody at 4-8 µg/mL working concentration.



Western Blotting

Image 2. Western Blot analysis of HepG2 cell lysate with COBLL1 polyclonal antibody at 0.5 ug/mL working concentration.