



[Go to Product page](#)

Datasheet for ABIN5575885  
**anti-CPAMD8 antibody**

1 Image

### Overview

Quantity:	100 µL
Target:	CPAMD8
Reactivity:	Human
Host:	Rabbit
Clonality:	Polyclonal
Conjugate:	This CPAMD8 antibody is un-conjugated
Application:	Immunohistochemistry (Paraffin-embedded Sections) (IHC (p))

### Product Details

Purpose:	Rabbit polyclonal antibody raised against recombinant CPAMD8.
Immunogen:	Recombinant protein corresponding to amino acids of human CPAMD8.
Sequence:	SDLGLNNITA KALAYGDTNC CRDGRSSKHP EENHADRRVP IGVDHVRRSV MVEAEGVPRA YTYSAFFCPS ERVHISTPNK YEFQYVQR
Isotype:	IgG
Cross-Reactivity:	Human

### Target Details

Target:	CPAMD8
Alternative Name:	CPAMD8 ( <a href="#">CPAMD8 Products</a> )
Background:	Full Gene Name: C3 and PZP-like, alpha-2-macroglobulin domain containing 8

## Target Details

Synonyms: FLJ42058,FLJ90618,K-CAP,KIAA1283,VIP

Gene ID: 27151

## Application Details

Application Notes: Immunohistochemistry (1:10-1:20)  
The optimal working dilution should be determined by the end user.

Restrictions: For Research Use only

## Handling

Format: Liquid

Buffer: In PBS, pH 7.2 (40 % glycerol, 0.02 % sodium azide)

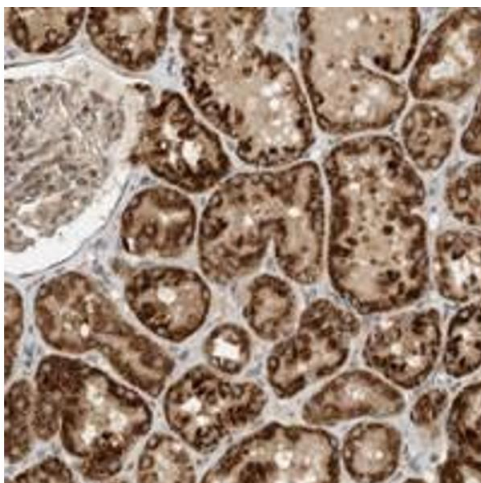
Preservative: Sodium azide

Precaution of Use: This product contains Sodium azide: a POISONOUS AND HAZARDOUS SUBSTANCE which should be handled by trained staff only.

Storage: 4 °C,-20 °C

Storage Comment: Store at 4°C. For long term storage store at -20°C.  
Aliquot to avoid repeated freezing and thawing.

## Images



### Immunohistochemistry

**Image 1.** Immunohistochemical staining of human kidney with CPAMD8 polyclonal antibody shows strong cytoplasmic positivity in cells of tubules at 1:10-1:20 dilution.