



[Go to Product page](#)

Datasheet for ABIN5575889

## anti-CPEB4 antibody

### 2 Images

#### Overview

|              |                                                                                    |
|--------------|------------------------------------------------------------------------------------|
| Quantity:    | 100 µL                                                                             |
| Target:      | CPEB4                                                                              |
| Reactivity:  | Human                                                                              |
| Host:        | Rabbit                                                                             |
| Clonality:   | Polyclonal                                                                         |
| Conjugate:   | This CPEB4 antibody is un-conjugated                                               |
| Application: | Western Blotting (WB), Immunohistochemistry (Paraffin-embedded Sections) (IHC (p)) |

#### Product Details

|                   |                                                                  |
|-------------------|------------------------------------------------------------------|
| Purpose:          | Rabbit polyclonal antibody raised against recombinant CPEB4.     |
| Immunogen:        | Recombinant protein corresponding to amino acids of human CPEB4. |
| Sequence:         | GDYGFGLVQ SNTGNKSAFP VRFHPLQPP HHHQNATPSP AAFINNNTAA NGSSA       |
| Isotype:          | IgG                                                              |
| Cross-Reactivity: | Human                                                            |

#### Target Details

|                   |                                                                                             |
|-------------------|---------------------------------------------------------------------------------------------|
| Target:           | CPEB4                                                                                       |
| Alternative Name: | CPEB4 ( <a href="#">CPEB4 Products</a> )                                                    |
| Background:       | Full Gene Name: cytoplasmic polyadenylation element binding protein 4<br>Synonyms: KIAA1673 |

## Target Details

Gene ID: 80315

## Application Details

Application Notes: Immunohistochemistry (1:200-1:500)  
Western Blot (1:250-1:500)  
The optimal working dilution should be determined by the end user.

Restrictions: For Research Use only

## Handling

Format: Liquid

Buffer: In PBS, pH 7.2 (40 % glycerol, 0.02 % sodium azide)

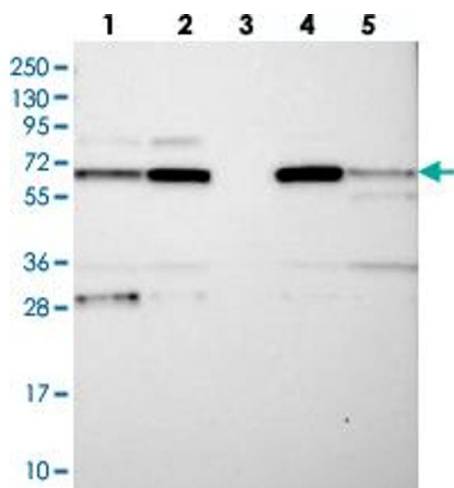
Preservative: Sodium azide

Precaution of Use: This product contains Sodium azide: a POISONOUS AND HAZARDOUS SUBSTANCE which should be handled by trained staff only.

Storage: 4 °C, -20 °C

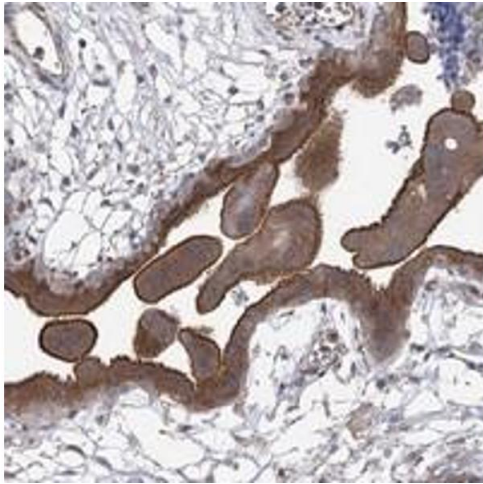
Storage Comment: Store at 4°C. For long term storage store at -20°C.  
Aliquot to avoid repeated freezing and thawing.

## Images



### Western Blotting

**Image 1.** Western blot analysis of Lane 1: RT-4, Lane 2: U-251 MG, Lane 3: Human Plasma, Lane 4: Liver, Lane 5: Tonsil with CPEB4 polyclonal antibody at 1:250-1:500 dilution.



### Immunohistochemistry

**Image 2.** Immunohistochemical staining of human placenta with CPEB4 polyclonal antibody shows strong membranous and cytoplasmic positivity in trophoblastic cells at 1:200-1:500 dilution.