

Datasheet for ABIN5575903
anti-CPS1 antibody (Internal Region)[Go to Product page](#)

2 Images

Overview

Quantity:	100 µL
Target:	CPS1
Binding Specificity:	Internal Region
Reactivity:	Human, Pig
Host:	Rabbit
Clonality:	Polyclonal
Conjugate:	This CPS1 antibody is un-conjugated
Application:	Western Blotting (WB), Immunohistochemistry (Paraffin-embedded Sections) (IHC (p))

Product Details

Purpose:	Rabbit polyclonal antibody raised against synthetic peptide of human CPS1.
Immunogen:	A synthetic peptide corresponding to internal region of human CPS1.
Sequence:	YPSVTNYLYV TYNGQEHDVN FDDHGMMVLG CGPYHIGSSV EFDWCAVSSI
Cross-Reactivity:	Human, Pig

Target Details

Target:	CPS1
Alternative Name:	CPS1 (CPS1 Products)
Background:	Full Gene Name: carbamoyl-phosphate synthetase 1, mitochondrial
Gene ID:	1373

Target Details

NCBI Accession:	NM_001875
Pathways:	Response to Growth Hormone Stimulus, Cellular Glucan Metabolic Process

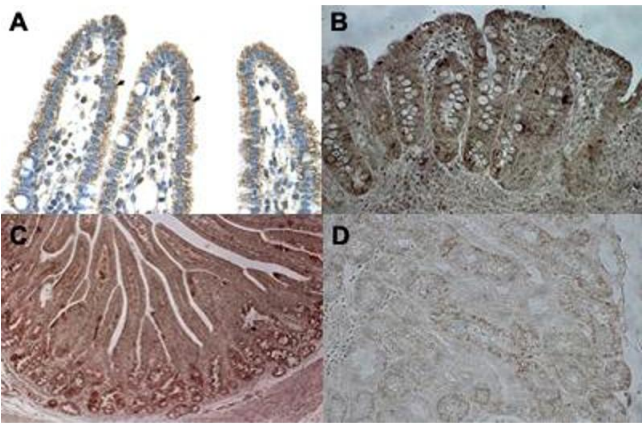
Application Details

Application Notes:	Immunohistochemistry (Formalin/PFA-fixed paraffin-embedded sections) (4-8 µg/mL) Western Blot The optimal working dilution should be determined by the end user.
Restrictions:	For Research Use only

Handling

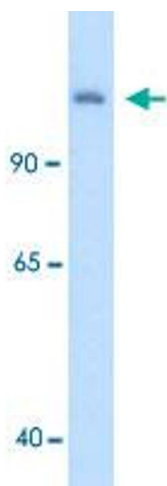
Format:	Liquid
Buffer:	In PBS (2 % sucrose, 0.09 % sodium azide).
Preservative:	Sodium azide
Precaution of Use:	This product contains Sodium azide: a POISONOUS AND HAZARDOUS SUBSTANCE which should be handled by trained staff only.
Storage:	4 °C,-20 °C
Storage Comment:	Store at 4°C. For long term storage store at -20°C. Aliquot to avoid repeated freezing and thawing.

Images



Immunohistochemistry

Image 1. Immunohistochemical staining (Formalin-fixed paraffin-embedded sections) of human intestine (A), pig ileum (B), pig duodenum (C) and pig kidney (D) with CPS1 polyclonal antibody .



Western Blotting

Image 2. Western Blot analysis of human fetal liver tissue lysate with CPS1 polyclonal antibody at 5 ug/mL working concentration.