

Datasheet for ABIN5575909
anti-CPSF6 antibody (AA 261-310)

3 Images

[Go to Product page](#)

Overview

Quantity:	100 µL
Target:	CPSF6
Binding Specificity:	AA 261-310
Reactivity:	Human
Host:	Rabbit
Clonality:	Polyclonal
Conjugate:	This CPSF6 antibody is un-conjugated
Application:	Western Blotting (WB), Immunofluorescence (IF), Immunohistochemistry (Paraffin-embedded Sections) (IHC (p))

Product Details

Purpose:	Rabbit polyclonal antibody raised against partial synthetic protein of human CPSF6.
Immunogen:	A synthetic peptide corresponding to amino acids 261-310 of human CPSF6.
Sequence:	PPLAGPPNRG DRPPPPVLFP GQPFQGPPPLG PLPPGPPPPV PGYGPPPPGPP
Isotype:	IgG
Cross-Reactivity:	Human

Target Details

Target:	CPSF6
Alternative Name:	CPSF6 (CPSF6 Products)

Target Details

Background: Full Gene Name: cleavage and polyadenylation specific factor 6, 68 kDa
Synonyms: CFIM,CFIM68,HPBR11-4,HPBR11-7

Gene ID: 11052

Application Details

Application Notes: Immunofluorescence (1:250)
Immunohistochemistry (1:250)
Western Blot (1:1000)
The optimal working dilution should be determined by the end user.

Restrictions: For Research Use only

Handling

Format: Liquid

Buffer: In PBS, pH 7.4 (2 % sucrose, 0.09 % sodium azide).

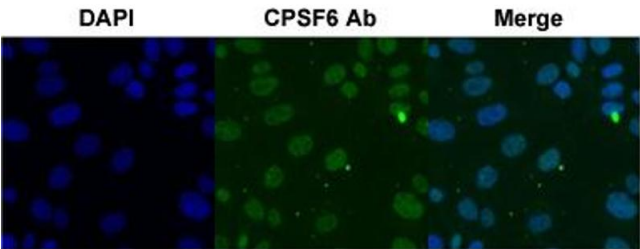
Preservative: Sodium azide

Precaution of Use: This product contains Sodium azide: a POISONOUS AND HAZARDOUS SUBSTANCE which should be handled by trained staff only.

Storage: 4 °C,-20 °C

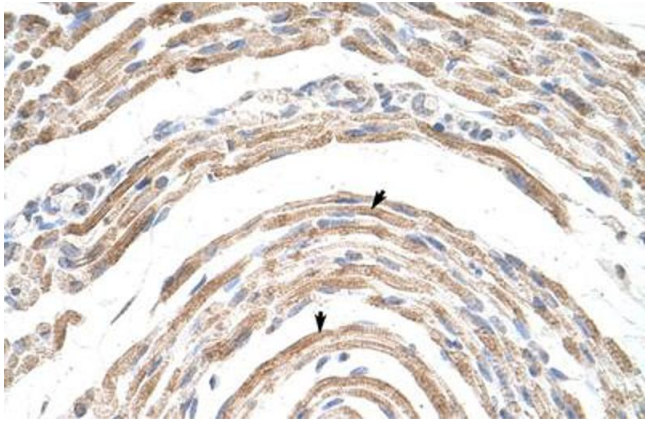
Storage Comment: Store at 4°C for up to 1 week. For long term storage store at -20°C.
Aliquot to avoid repeated freezing and thawing.

Images



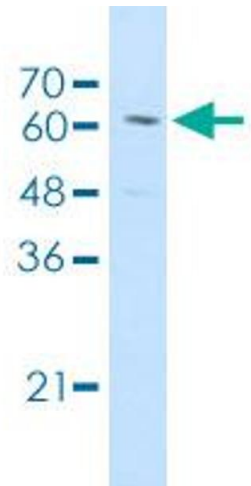
Immunofluorescence

Image 1. Immunofluorescent staining of SK-OV-3 cell with CPSF6 polyclonal antibody under 4 ug/mL working concentration.



Immunohistochemistry

Image 2. Immunohistochemical staining (Formalin-fixed paraffin-embedded sections) of human muscle with CPSF6 polyclonal antibody .



Western Blotting

Image 3. Western blot analysis of Jurkat cell lysate with CPSF6 polyclonal antibody .