

Datasheet for ABIN5575936

**anti-CRABP1 antibody**[Go to Product page](#)**1** Image

## Overview

Quantity:	100 µL
Target:	CRABP1
Reactivity:	Human
Host:	Mouse
Clonality:	Monoclonal
Conjugate:	This CRABP1 antibody is un-conjugated
Application:	ELISA, Western Blotting (WB), Immunocytochemistry (ICC), Immunofluorescence (IF), Flow Cytometry (FACS)

## Product Details

Purpose:	Mouse monoclonal antibody raised against full length recombinant CRABP1.
Immunogen:	Recombinant protein corresponding to full length human CRABP1.
Clone:	AT1A1
Isotype:	IgG2b
Specificity:	This antibody reacts with human CRABP1.
Cross-Reactivity:	Human, Mouse

## Target Details

Target:	CRABP1
Alternative Name:	CRABP1 ( <a href="#">CRABP1 Products</a> )

## Target Details

Background: Full Gene Name: cellular retinoic acid binding protein 1  
Synonyms: CRABP,CRABP-I,CRABPI,RBP5

Gene ID: 1381

## Application Details

Application Notes: Western Blot (1:500)  
The optimal working dilution should be determined by the end user.

Restrictions: For Research Use only

## Handling

Format: Liquid

Buffer: In PBS, pH 7.4 (10 % glycerol, 0.02 % sodium azide).

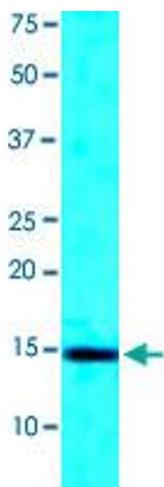
Preservative: Sodium azide

Precaution of Use: This product contains Sodium azide: a POISONOUS AND HAZARDOUS SUBSTANCE which should be handled by trained staff only.

Storage: -20 °C,-80 °C

Storage Comment: Store at 2°C to 8°C for 1 week. For long term storage, aliquot and store at -20°C to -80°C. Aliquot to avoid repeated freezing and thawing.

## Images



### SDS-PAGE

**Image 1.** The extracts of mouse eye (30 ug) were resolved by SDS-PAGE, transferred to NC membrane and probed with CRABP1 monoclonal antibody, clone AT1A1 (1 : 500). Proteins were visualized using a goat anti-mouse secondary antibody conjugated to HRP and an ECL detection system.