

Datasheet for ABIN5575976

**anti-CRHR2 antibody (Extracellular Domain)**[Go to Product page](#)**1** Image

## Overview

Quantity:	50 µg
Target:	CRHR2
Binding Specificity:	Extracellular Domain
Reactivity:	Human, Gorilla
Host:	Rabbit
Clonality:	Polyclonal
Conjugate:	This CRHR2 antibody is un-conjugated
Application:	Immunohistochemistry (Paraffin-embedded Sections) (IHC (p))

## Product Details

Purpose:	Rabbit polyclonal antibody raised against synthetic peptide of CRHR2.
Immunogen:	A synthetic peptide corresponding to 18 amino acids at extracellular domain of human CRHR2.
Specificity:	BLAST analysis of the peptide immunogen showed no homology with other human proteins.
Cross-Reactivity:	Gorilla, Human
Cross-Reactivity (Details):	BLAST analysis of the peptide immunogen showed no homology with other human proteins.

## Target Details

Target:	CRHR2
Alternative Name:	CRHR2 ( <a href="#">CRHR2 Products</a> )
Background:	Full Gene Name: corticotropin releasing hormone receptor 2

## Target Details

	Synonyms: CRFR2
Gene ID:	1395
Pathways:	<a href="#">Negative Regulation of Hormone Secretion</a> , <a href="#">cAMP Metabolic Process</a> , <a href="#">Feeding Behaviour</a>

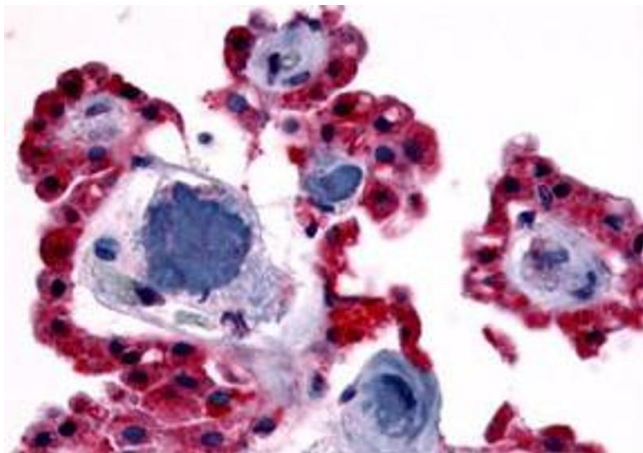
## Application Details

Application Notes:	Immunohistochemistry (Formalin/PFA-fixed paraffin-embedded sections) (13 µg/mL) The optimal working dilution should be determined by the end user.
Restrictions:	For Research Use only

## Handling

Format:	Liquid
Buffer:	In PBS (0.09 % sodium azide)
Preservative:	Sodium azide
Precaution of Use:	This product contains Sodium azide: a POISONOUS AND HAZARDOUS SUBSTANCE which should be handled by trained staff only.
Storage:	4 °C,-80 °C
Storage Comment:	Store at 4°C. For long term storage store at -80°C. Aliquot to avoid repeated freezing and thawing.

## Images



**Immunohistochemistry**

**Image 1.** Immunohistochemical staining of human brain, choroid plexus with CRHR2 polyclonal antibody . Immunohistochemistry of formalin-fixed, paraffin-embedded tissue after heat-induced antigen retrieval.