



[Go to Product page](#)

Datasheet for ABIN5576135
anti-CTDSPL antibody (N-Term)

3 Images

Overview

Quantity:	100 µL
Target:	CTDSPL
Binding Specificity:	N-Term
Reactivity:	Human
Host:	Rabbit
Clonality:	Polyclonal
Conjugate:	This CTDSPL antibody is un-conjugated
Application:	Western Blotting (WB), Immunohistochemistry (Paraffin-embedded Sections) (IHC (p))

Product Details

Purpose:	Rabbit polyclonal antibody raised against synthetic peptide of human CTDSPL.
Immunogen:	A synthetic peptide corresponding to N-terminus of human CTDSPL.
Sequence:	CCFRDYNVEA PPPSSPSVLP PLVEENGLQ KPPAKYLLPE VTVLDYGKKC
Cross-Reactivity:	Human

Target Details

Target:	CTDSPL
Alternative Name:	CTDSPL (CTDSPL Products)
Background:	Full Gene Name: CTD (carboxy-terminal domain, RNA polymerase II, polypeptide A) small phosphatase-like

Target Details

Synonyms: C3orf8,HYA22,PSR1,RBSP3,SCP3

Gene ID: 10217

NCBI Accession: [NM_005808](#)

Application Details

Application Notes: Immunohistochemistry (Formalin/PFA-fixed paraffin-embedded sections) (4-8 µg/mL)
Western Blot
The optimal working dilution should be determined by the end user.

Restrictions: For Research Use only

Handling

Format: Liquid

Buffer: In PBS (2 % sucrose, 0.09 % sodium azide).

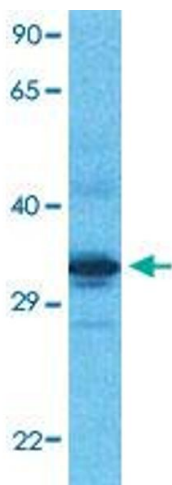
Preservative: Sodium azide

Precaution of Use: This product contains Sodium azide: a POISONOUS AND HAZARDOUS SUBSTANCE which should be handled by trained staff only.

Storage: 4 °C, -20 °C

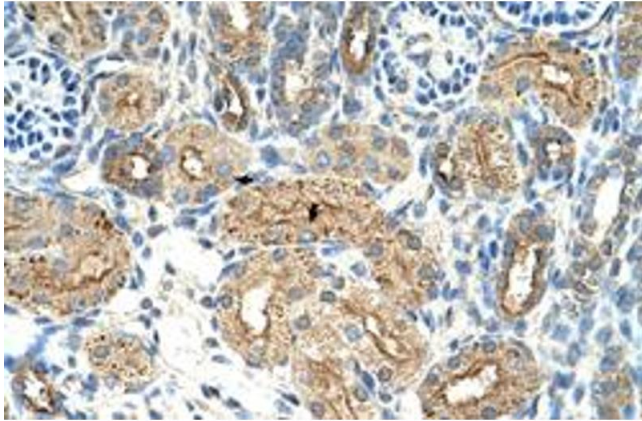
Storage Comment: Store at 4°C. For long term storage store at -20°C.
Aliquot to avoid repeated freezing and thawing.

Images



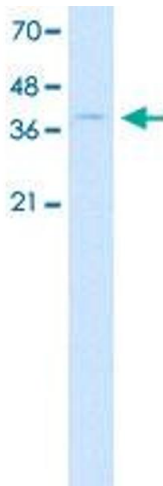
Western Blotting

Image 1. Western Blot analysis of human fetal liver tissue lysate with CTDSPL polyclonal antibody at 1 µg/mL working concentration.



Immunohistochemistry

Image 2. Immunohistochemical staining (Formalin-fixed paraffin-embedded sections) of human kidney with CTDSPL polyclonal antibody at 4-8 ug/mL working concentration.



Western Blotting

Image 3. Western Blot analysis of DLD1 cell lysate with CTDSPL polyclonal antibody at 0.2-1 ug/mL working concentration.