



[Go to Product page](#)

Datasheet for ABIN5576142
anti-CTH antibody (C-Term)

2 Images

Overview

Quantity:	100 µL
Target:	CTH
Binding Specificity:	C-Term
Reactivity:	Human
Host:	Rabbit
Clonality:	Polyclonal
Conjugate:	This CTH antibody is un-conjugated
Application:	Western Blotting (WB), Immunohistochemistry (Paraffin-embedded Sections) (IHC (p))

Product Details

Purpose:	Rabbit polyclonal antibody raised against synthetic peptide of human CTH.
Immunogen:	A synthetic peptide corresponding to C-terminus of human CTH.
Sequence:	ESNPWVEKVI YPGLPSHPQH ELVKRQCTGC TGMVTFYIKG TLQHAEIFLK
Cross-Reactivity:	Human

Target Details

Target:	CTH
Alternative Name:	CTH (CTH Products)
Background:	Full Gene Name: cystathionase (cystathionine gamma-lyase) Synonyms: MGC9471

Target Details

Gene ID:	1491
NCBI Accession:	NM_001902
Pathways:	ER-Nucleus Signaling , Warburg Effect

Application Details

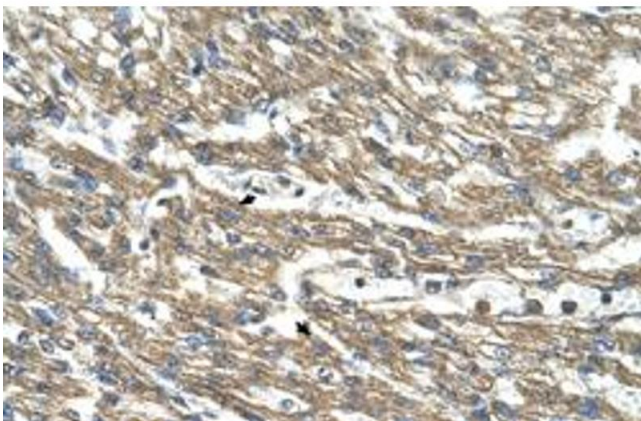
Application Notes: Immunohistochemistry (Formalin/PFA-fixed paraffin-embedded sections) (4-8 µg/mL)
Western Blot (2.5 µg/mL)
The optimal working dilution should be determined by the end user.

Restrictions: For Research Use only

Handling

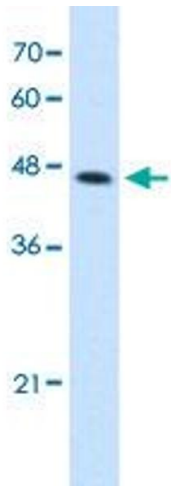
Format:	Liquid
Buffer:	In PBS (2 % sucrose, 0.09 % sodium azide).
Preservative:	Sodium azide
Precaution of Use:	This product contains Sodium azide: a POISONOUS AND HAZARDOUS SUBSTANCE which should be handled by trained staff only.
Storage:	4 °C, -20 °C
Storage Comment:	Store at 4°C. For long term storage store at -20°C. Aliquot to avoid repeated freezing and thawing.

Images



Immunohistochemistry

Image 1. Immunohistochemical staining (Formalin-fixed paraffin-embedded sections) of human heart with CTH polyclonal antibody at 4-8 ug/mL working concentration.



Western Blotting

Image 2. Western Blot analysis of HepG2 cell lysate with CTH polyclonal antibody at 2.5 ug/mL working concentration.