

Datasheet for ABIN5576203  
**anti-Cathepsin H antibody**[Go to Product page](#)

## 1 Image

## Overview

Quantity:	100 µL
Target:	Cathepsin H (CTSH)
Reactivity:	Human
Host:	Mouse
Clonality:	Monoclonal
Conjugate:	This Cathepsin H antibody is un-conjugated
Application:	Western Blotting (WB), ELISA

## Product Details

Purpose:	Mouse monoclonal antibody raised against full length recombinant CTSH.
Immunogen:	Recombinant protein corresponding to full length human CTSH.
Clone:	69s45
Isotype:	IgG1
Specificity:	This antibody recognizes recombinant protein CTSH.
Cross-Reactivity:	Human

## Target Details

Target:	Cathepsin H (CTSH)
Alternative Name:	CTSH ( <a href="#">CTSH Products</a> )
Background:	Full Gene Name: cathepsin H

## Target Details

	Synonyms: ACC-4,ACC-5,CPSB,DKFZp686B24257,MGC1519,minichain
Gene ID:	1512
Pathways:	<a href="#">Positive Regulation of Endopeptidase Activity</a>

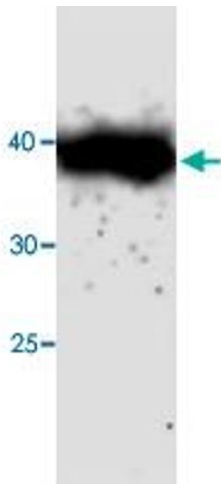
## Application Details

Application Notes:	Western Blot (1:1000) The optimal working dilution should be determined by the end user.
Restrictions:	For Research Use only

## Handling

Format:	Liquid
Concentration:	1 µg/µL
Buffer:	In citrate-Tris-HCl, pH 7.0 (0.02 % Proclin 300)
Preservative:	ProClin
Precaution of Use:	This product contains ProClin: a POISONOUS AND HAZARDOUS SUBSTANCE which should be handled by trained staff only.
Storage:	-20 °C
Storage Comment:	Store at -20°C. Aliquot to avoid repeated freezing and thawing.

## Images



### Western Blotting

**Image 1.** Western blot analysis in CTSH recombinant protein with CTSH monoclonal antibody, clone 69s45 at 1 : 1000 dilution.