

Datasheet for ABIN5576260  
**anti-CXCR1 antibody (C-Term)**[Go to Product page](#)

## 1 Image

## Overview

Quantity:	50 µg
Target:	CXCR1
Binding Specificity:	C-Term
Reactivity:	Human, Chimpanzee, Gorilla
Host:	Rabbit
Clonality:	Polyclonal
Conjugate:	This CXCR1 antibody is un-conjugated
Application:	Immunohistochemistry (Paraffin-embedded Sections) (IHC (p))

## Product Details

Purpose:	Rabbit polyclonal antibody raised against synthetic peptide of CXCR1.
Immunogen:	A synthetic peptide corresponding to 17 amino acids at C-terminus of human CXCR1.
Specificity:	BLAST analysis of the peptide immunogen showed no homology with other human proteins.
Cross-Reactivity:	Chimpanzee, Gorilla, Human
Cross-Reactivity (Details):	BLAST analysis of the peptide immunogen showed no homology with other human proteins.

## Target Details

Target:	CXCR1
Alternative Name:	CXCR1 ( <a href="#">CXCR1 Products</a> )
Background:	Full Gene Name: chemokine (C-X-C motif) receptor 1

## Target Details

	Synonyms: C-C,C-C-CKR-1,CD128,CD181,CDw128a,CKR-1,CMKAR1,IL8R1,IL8RA,IL8RBA
Gene ID:	3577
Pathways:	<a href="#">cAMP Metabolic Process</a>

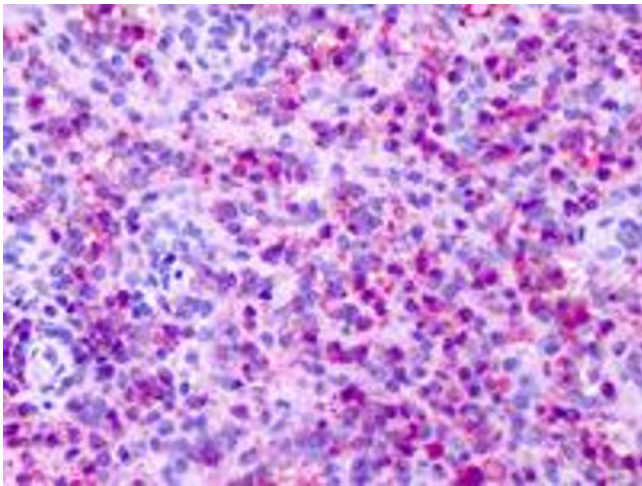
## Application Details

Application Notes:	Immunohistochemistry (Formalin/PFA-fixed paraffin-embedded sections) (16 µg/mL) The optimal working dilution should be determined by the end user.
Restrictions:	For Research Use only

## Handling

Format:	Liquid
Buffer:	In PBS (0.09 % sodium azide)
Preservative:	Sodium azide
Precaution of Use:	This product contains Sodium azide: a POISONOUS AND HAZARDOUS SUBSTANCE which should be handled by trained staff only.
Storage:	4 °C,-80 °C
Storage Comment:	Store at 4°C. For long term storage store at -80°C. Aliquot to avoid repeated freezing and thawing.

## Images



### Immunohistochemistry

**Image 1.** Immunohistochemistry (Formalin/PFA-fixed paraffin-embedded sections) of human spleen neutrophils with CXCR1 polyclonal antibody . Immunohistochemistry of formalin-fixed, paraffin-embedded tissue after heat-induced antigen retrieval.