



[Go to Product page](#)

Datasheet for ABIN5576275

anti-CXCR5 antibody (Cytoplasmic Domain)

1 Image

Overview

Quantity:	50 µg
Target:	CXCR5
Binding Specificity:	Cytoplasmic Domain
Reactivity:	Human, Monkey, Gorilla
Host:	Rabbit
Clonality:	Polyclonal
Conjugate:	This CXCR5 antibody is un-conjugated
Application:	Immunohistochemistry (Paraffin-embedded Sections) (IHC (p))

Product Details

Purpose:	Rabbit polyclonal antibody raised against synthetic peptide of CXCR5.
Immunogen:	A synthetic peptide corresponding to 16 amino acids at cytoplasmic domain of human CXCR5.
Specificity:	BLAST analysis of the peptide immunogen showed no homology with other human proteins, except MTA3 (50 %).
Cross-Reactivity:	Gorilla, Human, Monkey
Cross-Reactivity (Details):	BLAST analysis of the peptide immunogen showed no homology with other human proteins, except MTA3 (50 %).

Target Details

Target:	CXCR5
---------	-------

Target Details

Alternative Name:	CXCR5 (CXCR5 Products)
Background:	Full Gene Name: chemokine (C-X-C motif) receptor 5 Synonyms: BLR1,CD185,MDR15,MGC117347
Gene ID:	643

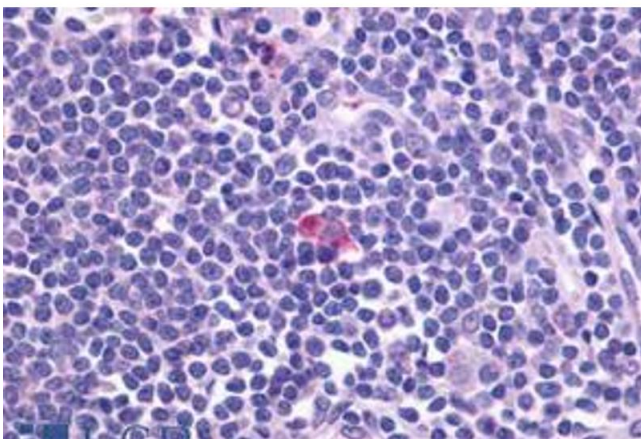
Application Details

Application Notes:	Immunohistochemistry (Formalin/PFA-fixed paraffin-embedded sections) (5-18 µg/mL) The optimal working dilution should be determined by the end user.
Restrictions:	For Research Use only

Handling

Format:	Liquid
Buffer:	In PBS (0.09 % sodium azide)
Preservative:	Sodium azide
Precaution of Use:	This product contains Sodium azide: a POISONOUS AND HAZARDOUS SUBSTANCE which should be handled by trained staff only.
Storage:	4 °C,-80 °C
Storage Comment:	Store at 4°C. For long term storage store at -80°C. Aliquot to avoid repeated freezing and thawing.

Images



Immunohistochemistry

Image 1. Immunohistochemical staining of human spleen with CXCR5 polyclonal antibody . Immunohistochemistry of formalin-fixed, paraffin-embedded tissue after heat-induced antigen retrieval.