

Datasheet for ABIN5576277
anti-CXCR6 antibody (Cytoplasmic Domain)[Go to Product page](#)

1 Image

Overview

Quantity:	50 µg
Target:	CXCR6
Binding Specificity:	Cytoplasmic Domain
Reactivity:	Human, Monkey, Gorilla, Chimpanzee
Host:	Rabbit
Clonality:	Polyclonal
Conjugate:	This CXCR6 antibody is un-conjugated
Application:	Immunohistochemistry (Paraffin-embedded Sections) (IHC (p))

Product Details

Purpose:	Rabbit polyclonal antibody raised against synthetic peptide of CXCR6.
Immunogen:	A synthetic peptide corresponding to 16 amino acids at cytoplasmic domain of human CXCR6.
Specificity:	BLAST analysis of the peptide immunogen showed no homology with other human proteins.
Cross-Reactivity:	Chimpanzee, Gorilla, Human, Monkey
Cross-Reactivity (Details):	BLAST analysis of the peptide immunogen showed no homology with other human proteins.

Target Details

Target:	CXCR6
Alternative Name:	CXCR6 (CXCR6 Products)
Background:	Full Gene Name: chemokine (C-X-C motif) receptor 6

Target Details

Synonyms: BONZO,CD186,STRL33,TYMSTR

Gene ID: 10663

Application Details

Application Notes: Immunohistochemistry (Formalin/PFA-fixed paraffin-embedded sections) (6.8 µg/mL)
The optimal working dilution should be determined by the end user.

Restrictions: For Research Use only

Handling

Format: Liquid

Buffer: In PBS (0.09 % sodium azide)

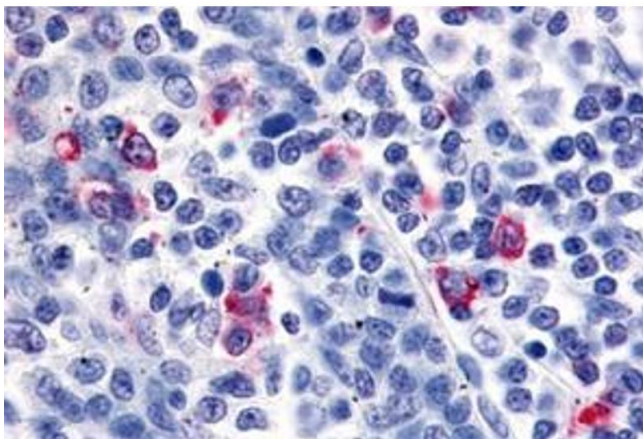
Preservative: Sodium azide

Precaution of Use: This product contains Sodium azide: a POISONOUS AND HAZARDOUS SUBSTANCE which should be handled by trained staff only.

Storage: 4 °C,-80 °C

Storage Comment: Store at 4°C. For long term storage store at -80°C.
Aliquot to avoid repeated freezing and thawing.

Images



Immunohistochemistry

Image 1. Immunohistochemical staining of human tonsil, interfollicular zone with CXCR6 polyclonal antibody . Immunohistochemistry of formalin-fixed, paraffin-embedded tissue after heat-induced antigen retrieval.