



[Go to Product page](#)

Datasheet for ABIN5576287
anti-CXORF23 antibody

1 Image

Overview

Quantity:	100 µL
Target:	CXORF23
Reactivity:	Human
Host:	Rabbit
Clonality:	Polyclonal
Conjugate:	This CXORF23 antibody is un-conjugated
Application:	Immunohistochemistry (Paraffin-embedded Sections) (IHC (p))

Product Details

Purpose:	Rabbit polyclonal antibody raised against recombinant CXorf23.
Immunogen:	Recombinant protein corresponding to amino acids of human CXorf23.
Sequence:	VAVGRKSENF HPVFEHLDST QNTENKPTGE FAQEITIIH QVKANYFPSP GITLHERFST MQDIHKADVN EIPLNSDPEI HRRIDMSLAE LQSKQAVIYE SEQTLIKIID PNDLRHDIER RRKERLQNEDEHIFHIASAA ERDDQN
Isotype:	IgG
Cross-Reactivity:	Human

Target Details

Target:	CXORF23
Alternative Name:	CXorf23 (CXORF23 Products)

Target Details

Background: Full Gene Name: chromosome X open reading frame 23

Gene ID: 256643

Application Details

Application Notes: Immunohistochemistry (1:200-1:500)
The optimal working dilution should be determined by the end user.

Restrictions: For Research Use only

Handling

Format: Liquid

Buffer: In PBS, pH 7.2 (40 % glycerol, 0.02 % sodium azide)

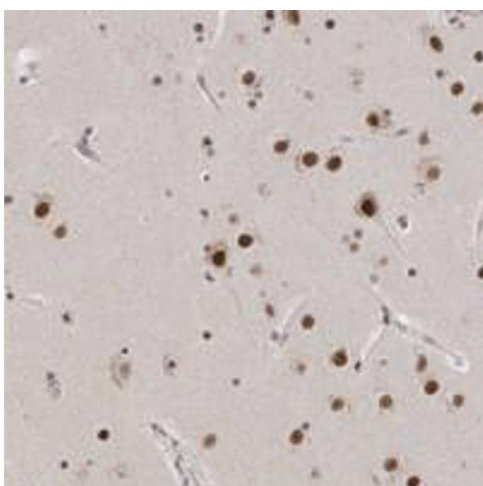
Preservative: Sodium azide

Precaution of Use: This product contains Sodium azide: a POISONOUS AND HAZARDOUS SUBSTANCE which should be handled by trained staff only.

Storage: 4 °C, -20 °C

Storage Comment: Store at 4°C. For long term storage store at -20°C.
Aliquot to avoid repeated freezing and thawing.

Images



Immunohistochemistry

Image 1. Immunohistochemical staining of human cerebral cortex with CXorf23 polyclonal antibody shows strong nuclear positivity in neuronal cells.