



[Go to Product page](#)

Datasheet for ABIN5576295  
**anti-CXorf58 antibody**

1 Image

Overview

Quantity:	100 µL
Target:	CXorf58
Reactivity:	Human
Host:	Rabbit
Clonality:	Polyclonal
Conjugate:	This CXorf58 antibody is un-conjugated
Application:	Immunohistochemistry (Paraffin-embedded Sections) (IHC (p))

Product Details

Purpose:	Rabbit polyclonal antibody raised against recombinant CXorf58.
Immunogen:	Recombinant protein corresponding to amino acids of human CXorf58.
Sequence:	THEILKKVAP LEAKLIKDPT MQCKIRFRFR GETFPPFIVF KIFLHTDGHG YKYFSGKNVL MPSSKAVDDA CKLMGERKGFH RIIMEDER
Isotype:	IgG
Cross-Reactivity:	Human

Target Details

Target:	CXorf58
Alternative Name:	CXorf58 ( <a href="#">CXorf58 Products</a> )
Background:	Full Gene Name: chromosome X open reading frame 58

## Target Details

Synonyms: FLJ25444

Gene ID: 254158

## Application Details

Application Notes: Immunohistochemistry (1:50-1:200)  
The optimal working dilution should be determined by the end user.

Restrictions: For Research Use only

## Handling

Format: Liquid

Buffer: In PBS, pH 7.2 (40 % glycerol, 0.02 % sodium azide)

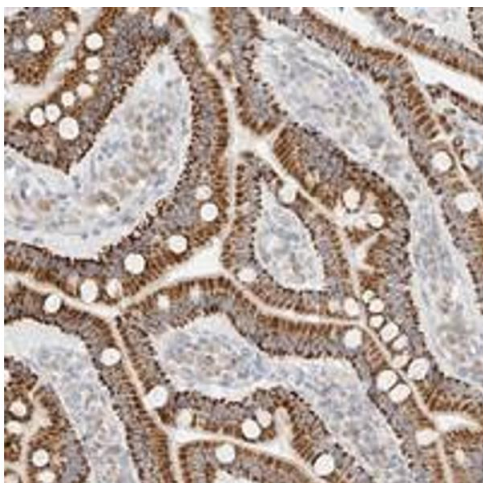
Preservative: Sodium azide

Precaution of Use: This product contains Sodium azide: a POISONOUS AND HAZARDOUS SUBSTANCE which should be handled by trained staff only.

Storage: 4 °C, -20 °C

Storage Comment: Store at 4°C. For long term storage store at -20°C.  
Aliquot to avoid repeated freezing and thawing.

## Images



### Immunohistochemistry

**Image 1.** Immunohistochemical staining of human duodenum with CXorf58 polyclonal antibody strong cytoplasmic positivity in glandular cells at 1:50-1:200 dilution.