

Datasheet for ABIN5576365 anti-CysLTR1 antibody (C-Term)



[Go to Product page](#)

1 Image

Overview

Quantity:	50 µg
Target:	CysLTR1 (CYSLTR1)
Binding Specificity:	C-Term
Reactivity:	Human, Gorilla
Host:	Rabbit
Clonality:	Polyclonal
Conjugate:	This CysLTR1 antibody is un-conjugated
Application:	Immunohistochemistry (Paraffin-embedded Sections) (IHC (p))

Product Details

Purpose:	Rabbit polyclonal antibody raised against synthetic peptide of CYSLTR1.
Immunogen:	A synthetic peptide corresponding to 20 amino acid at C-terminus of human CYSLTR1.
Specificity:	BLAST analysis of the peptide immunogen showed no homology with other human proteins, except BRCA1 (45 %).
Cross-Reactivity:	Gorilla, Human
Cross-Reactivity (Details):	BLAST analysis of the peptide immunogen showed no homology with other human proteins, except BRCA1 (45 %).

Target Details

Target:	CysLTR1 (CYSLTR1)
---------	-------------------

Target Details

Alternative Name:	CYSLTR1 (CYSLTR1 Products)
Background:	Full Gene Name: cysteinyl leukotriene receptor 1 Synonyms: CYSLT1,CYSLT1R,CYSLTR,HG55,HMTMF81,MGC46139
Gene ID:	10800

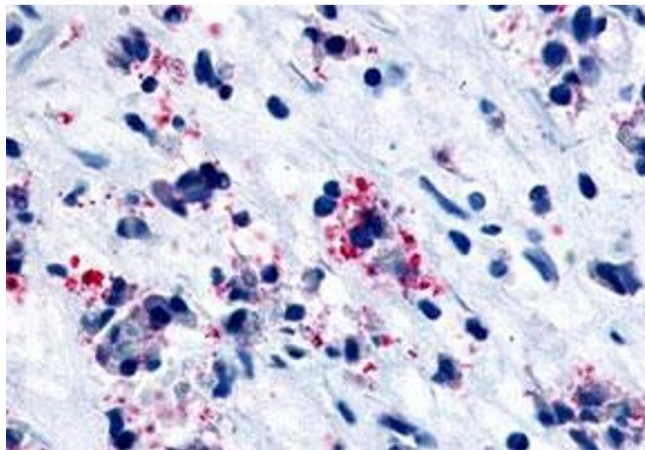
Application Details

Application Notes:	Immunohistochemistry (Formalin/PFA-fixed paraffin-embedded sections) (9-22 µg/mL) The optimal working dilution should be determined by the end user.
Restrictions:	For Research Use only

Handling

Format:	Liquid
Buffer:	In PBS (0.09 % sodium azide)
Preservative:	Sodium azide
Precaution of Use:	This product contains Sodium azide: a POISONOUS AND HAZARDOUS SUBSTANCE which should be handled by trained staff only.
Storage:	4 °C,-80 °C
Storage Comment:	Store at 4°C. For long term storage store at -80°C. Aliquot to avoid repeated freezing and thawing.

Images



Immunohistochemistry

Image 1. Immunohistochemistry (Formalin/PFA-fixed paraffin-embedded sections) of human nasal mucosa, allergic rhinitis, eosinophils with CYSLTR1 polyclonal antibody . Immunohistochemistry of formalin-fixed, paraffin-embedded tissue after heat-induced antigen retrieval.