

Datasheet for ABIN5576371
anti-CasLTR2 antibody (C-Term)[Go to Product page](#)

1 Image

Overview

Quantity:	50 µg
Target:	CasLTR2 (CYSLTR2)
Binding Specificity:	C-Term
Reactivity:	Human
Host:	Rabbit
Clonality:	Polyclonal
Conjugate:	This CasLTR2 antibody is un-conjugated
Application:	Immunohistochemistry (Paraffin-embedded Sections) (IHC (p))

Product Details

Purpose:	Rabbit polyclonal antibody raised against synthetic peptide of CYSLTR2.
Immunogen:	A synthetic peptide corresponding to 20 amino acid at C-terminus of human CYSLTR2.
Specificity:	BLAST analysis of the peptide immunogen showed no homology with other human proteins.
Cross-Reactivity:	Human
Cross-Reactivity (Details):	BLAST analysis of the peptide immunogen showed no homology with other human proteins.

Target Details

Target:	CasLTR2 (CYSLTR2)
Alternative Name:	CYSLTR2 (CYSLTR2 Products)
Background:	Full Gene Name: cysteinyl leukotriene receptor 2

Target Details

Synonyms: CYSLT2,CYSLT2R,GPCR,HG57,HPN321,KPG_011,PSEC0146,hGPCR21

Gene ID: 57105

Application Details

Application Notes: Immunohistochemistry (Formalin/PFA-fixed paraffin-embedded sections) (5 µg/mL)
The optimal working dilution should be determined by the end user.

Restrictions: For Research Use only

Handling

Format: Liquid

Buffer: In PBS (0.09 % sodium azide)

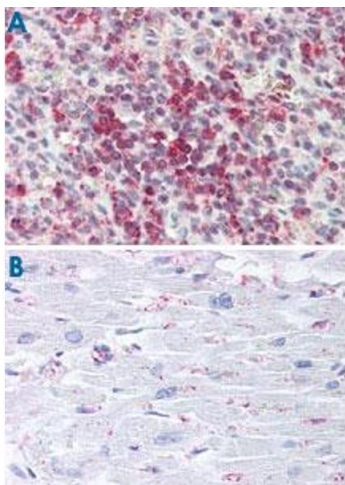
Preservative: Sodium azide

Precaution of Use: This product contains Sodium azide: a POISONOUS AND HAZARDOUS SUBSTANCE which should be handled by trained staff only.

Storage: 4 °C,-80 °C

Storage Comment: Store at 4°C. For long term storage store at -80°C.
Aliquot to avoid repeated freezing and thawing.

Images



Immunohistochemistry

Image 1. Immunohistochemistry (Formalin/PFA-fixed paraffin-embedded sections) of human spleen (A) and human heart tissue (B) with CYSLTR2 polyclonal antibody . Immunohistochemistry of formalin-fixed, paraffin-embedded tissue after heat-induced antigen retrieval.