

Datasheet for ABIN5576372  
**anti-CasLTR2 antibody (N-Term)**[Go to Product page](#)

## 1 Image

## Overview

|                      |   |
|----------------------|---|
| Quantity:            | 50 µg   |
| Target:              | CasLTR2 (CYSLTR2)   |
| Binding Specificity: | N-Term  |
| Reactivity:          | Human, Gorilla  |
| Host:                | Rabbit  |
| Clonality:           | Polyclonal  |
| Conjugate:           | This CasLTR2 antibody is un-conjugated                      |
| Application:         | Immunohistochemistry (Paraffin-embedded Sections) (IHC (p)) |

## Product Details

|                             |   |
|-----------------------------|---|
| Purpose:                    | Rabbit polyclonal antibody raised against synthetic peptide of CYSLTR2.               |
| Immunogen:                  | A synthetic peptide corresponding to 15 amino acid at N-terminus of human CYSLTR2.    |
| Specificity:                | BLAST analysis of the peptide immunogen showed no homology with other human proteins. |
| Cross-Reactivity:           | Gorilla, Human  |
| Cross-Reactivity (Details): | BLAST analysis of the peptide immunogen showed no homology with other human proteins. |

## Target Details

|                   |  |
|-------------------|--|
| Target:           | CasLTR2 (CYSLTR2)                                |
| Alternative Name: | CYSLTR2 ( <a href="#">CYSLTR2 Products</a> )     |
| Background:       | Full Gene Name: cysteinyl leukotriene receptor 2 |

## Target Details

Synonyms: CYSLT2,CYSLT2R,GPCR,HG57,HPN321,KPG\_011,PSEC0146,hGPCR21

Gene ID: 57105

## Application Details

Application Notes: Immunohistochemistry (Formalin/PFA-fixed paraffin-embedded sections) (10 µg/mL)  
The optimal working dilution should be determined by the end user.

Restrictions: For Research Use only

## Handling

Format: Liquid

Buffer: In PBS (0.09 % sodium azide)

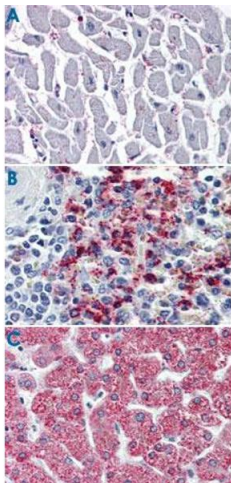
Preservative: Sodium azide

Precaution of Use: This product contains Sodium azide: a POISONOUS AND HAZARDOUS SUBSTANCE which should be handled by trained staff only.

Storage: 4 °C,-80 °C

Storage Comment: Store at 4°C. For long term storage store at -80°C.  
Aliquot to avoid repeated freezing and thawing.

## Images



### Immunohistochemistry

**Image 1.** Immunohistochemistry (Formalin/PFA-fixed paraffin-embedded sections) of human heart (A), human spleen (B) and human liver tissue (C) tissue with CYSLTR2 polyclonal antibody . Immunohistochemistry of formalin-fixed, paraffin-embedded tissue after heat-induced antigen retrieval.